

## Switch units (press control valves) type CR

The switch units type CR, available in three sizes, are intended for the control of bottom and top ram presses, which are driven by dual stage pumps. They consist of a 2/2-way ball seated directional valve, a ball type check valve and pressure valves. Low pressure and high pressure circuit are joined during rapid transverse, as soon as the set pressure is achieved or exceeded the low pressure circuit is switched in idle circulation mode, whereas the high pressure circuit continues feeding the press cylinder. An automatic pre-release ensures decompression without pressure surges. These switch units are designed for direct mounting onto our hydraulic power packs type MP and RZ.

### Features and benefits:

- Optimized for the controls of bottom ram presses
- Smooth, gentle switching
- No pressure drop during press operation due to zero leakage
- Fully automatic switching of the low-pressure pump to circulation

### Intended applications:

- Machine tools (presses)
- Woodworking and processing machinery
- Printing and paper technology
- Foodstuff and packaging machinery



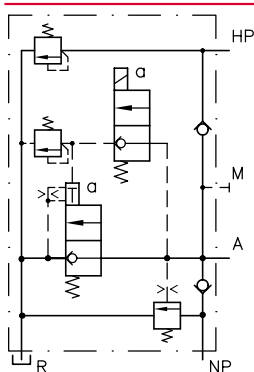
<b>Nomenclature:</b>	Valve combination consisting of: <ul style="list-style-type: none"> <li>■ 2/2-directional seated valve</li> <li>■ Ball-type check valve</li> <li>■ Pressure valve</li> </ul>
<b>Design:</b>	Individual valve for pipe connection
<b>Actuation:</b>	Solenoid Manual
<b>p<sub>max</sub>:</b>	HP 400 bar LP 30 ... 60 bar
<b>Q<sub>max</sub>:</b>	HP 8 ... 20 lpm LP 80 ... 160 lpm A → R 160 ... 300 lpm

### Design and order coding example

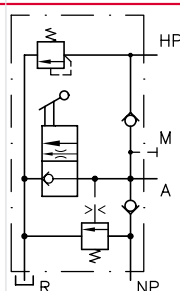
<b>CR4</b>	<b>M-WG230</b>	<b>- 400/60</b>	
		<b>Pressure settings [bar]</b>	High-/low pressure
	<b>Actuation mode</b>	<ul style="list-style-type: none"> <li>■ Solenoid</li> <li>■ Manually</li> </ul>	Voltage of the actuation solenoids 24V DC, 230V AC 50/60 Hz
<b>Basic type, size</b>	Type CR, size 4 and 5		

## Function

### CR 4M and CR 5M

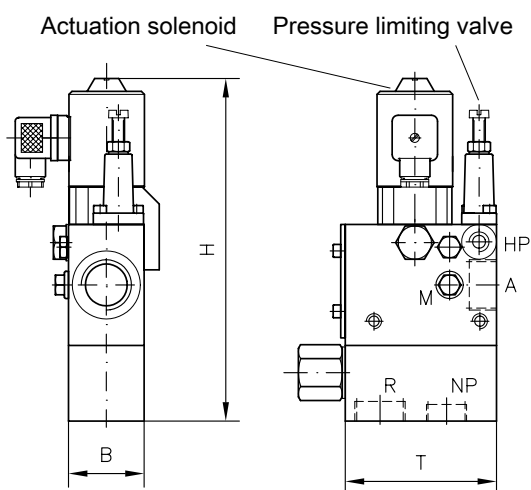


### CR 4H

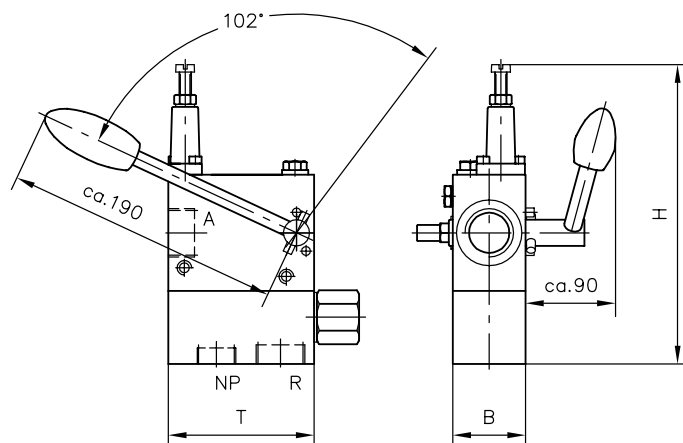


## General parameters and dimensions

### CR 4M



### CR 4H



	$Q_{max}$ [lpm]			$p_{max}$ [bar]		Ports (BSPP)				Dimensions [mm]			m [kg]
	HP	NP	A→R	HP	NP	A and R	HP	NP	M	H	B	T	
CR 4M	8	80	200	400	30 ... 60	G 1	G 1/4	G 3/4	G 1/4	max. 247.5	50	100	5.2
CR 4H	8	80	200	400	30 ... 60	G 1	G 1/4	G 3/4	G 1/4	max. 202	50	100	4.7
CR 5M	20	160	300	400	30 ... 60	G 1 1/4	G 3/8	G 1	G 1/4	max 277.5	63	135	10.0

### Associated technical data sheets:

- Switch units type CR: [D 7150](#)

### Similar products:

- Two-stage valves type NE: [D 7161](#)

### Hydraulic power packs:

- Hydraulic power packs type RZ: [D 6910](#), [D 6910 H](#)
- Compact hydraulic power packs type MP, MPN, MPNW, MPW: [D 7200](#), [D 7200 H](#), [D 7207](#)

### Plugs:

- With LEDs or to support the EMV etc.: [D 7163](#)