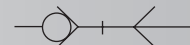
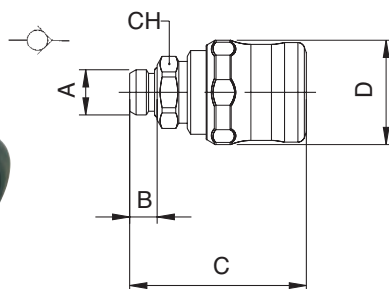

B-12
1:1

620 SERIES

UNI ISO 6150 B-12

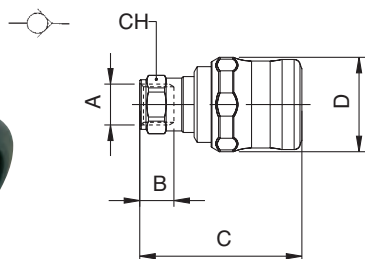
5,5 mm

Pressione d'esercizio / Working pressure: 0 - 15 bar

621

PRESA CON ATTACCO MASCHIO - MALE SOCKET


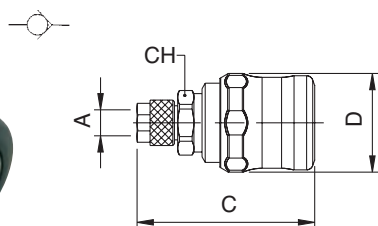
Codice Code	A	B	C	D	CH	Conf. Pack.
0062100001	1/4	8	51.5	30.5	19	10
0062100002	3/8	9	52	30.5	20	10
0062100003	1/2	10	53	30.5	25	10

622

PRESA CON ATTACCO FEMMINA - FEMALE SOCKET


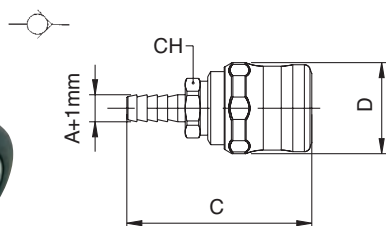
Codice Code	A	B	C	D	CH	Conf. Pack.
0062200001	1/4	11	52	30.5	17	10
0062200002	3/8	12	53	30.5	20	10
0062200003	1/2	15	56	30.5	24	10

624

PRESA CON ATTACCO A CALZAMENTO - COMPRESSION SOCKET


Codice Code	A	B	C	D	CH	Conf. Pack.
0062400001	6/4	-	55	30.5	18	10
0062400002	8/6	-	54.5	30.5	18	10
0062400005	10/6.5	-	57.5	30.5	18	10
0062400003	10/8	-	56.5	30.5	18	10
0062400006	12/8	-	58	30.5	18	10
0062400004	12/10	-	57	30.5	18	10

625

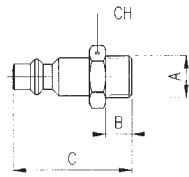
PRESA CON PORTAGOMMA A RESCA - SOCKET WITH REST FOR RUBBER HOSE


Codice Code	A	B	C	D	CH	Conf. Pack.
0062500001	6	-	61.5	30.5	18	10
0062500002	8	-	61.5	30.5	18	10
0062500003	10	-	61.5	30.5	18	10
0062500004	12	-	61.5	30.5	18	10

221AC

INNESTO IN AVP CON ATTACCO MASCHIO - AVP MALE PLUG

**ACCIAIO
STEEL**

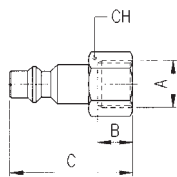


Codice Code	A	B	C	D	CH	Conf. Pack.
221AC005103ZI	1/4	8	36.5	-	17	25
221AC005104ZI	3/8	9	37.5	-	19	25
221AC005105ZI	1/2	10	39	-	24	25

222AC

INNESTO IN AVP CON ATTACCO FEMMINA - AVP FEMALE PLUG

**ACCIAIO
STEEL**

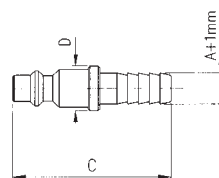


Codice Code	A	B	C	D	CH	Conf. Pack.
222AC005103ZI	1/4	11	36.5	-	17	25
222AC005104ZI	3/8	11.5	37	-	19	25
222AC005105ZI	1/2	14	39.5	-	24	25

225AC

INNESTO IN AVP CON PORTAGOMMA A RESCA - AVP PLUG WITH REST FOR RUBBER HOSE

**ACCIAIO
STEEL**



Codice Code	A	B	C	D	CH	Conf. Pack.
225AC0051X4ZI	6	-	43.5	12	-	25
225AC0051X7ZI	8	-	43.5	12	-	25
225AC0051X9ZI	10	-	46	14	-	25
225AC0051Y1ZI	12	-	46	16	-	25