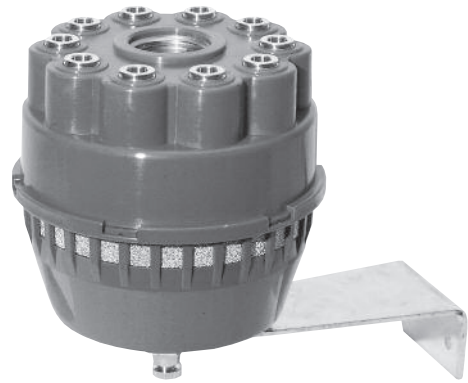


Version	Symbol	Code	Item
Exhausts conveyor		080001	CSC1



The exhausts conveyor is a useful and practical tool to be used where more exhausts (of one or more machines) have to be conveyed to one silencing element only; the exhaust conveyor, compared with the traditional silencer, keeps the work place clean as it doesn't exhaust the oil nebulized by the plant into the air.

The various tubes from different machines are connected with the exhaust conveyor upper side by pre-mounted push-in fittings (female 1" thread can also be used).

The air mixed with oil flows into the respective chamber linked with a connection (for this reason it is not necessary to close the positions not used) and into a thick aluminium wire filter that separates air from oil, keeping the latter back. The air passes through the filter and then flows outside through a second sintered bronze filter covering the whole conveyor circumference, while the oil drops to a vessel below, which can be emptied by a manual exhaust placed at the bottom of the conveyor.

Technical data	
Fluid	Compressed air
Pressure range	0 ÷ 12 bar
Temperature range	-20 °C ÷ + 70°C
Connections	10 connections with integral 8 mm push-in fittings, 1 port with female BSP 1" thread
Connection tubes	Calibrated nylon, polyurethane and rilsan
Tube tolerances	± 0,05 mm
Materials	Body: Acetal resin Separator filter: Aluminium External filter: Sintered bronze Connections: Brass Bracket: White zinc plated steel

type: **CSC1**

