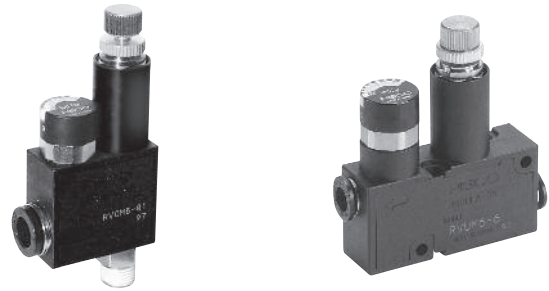


# Accessories with integrated function

## Pressure regulators



Version	Symbol	Type
In-line, with push-in fitting		V57
90°, with male thread on inlet and push-in fitting on outlet		V58



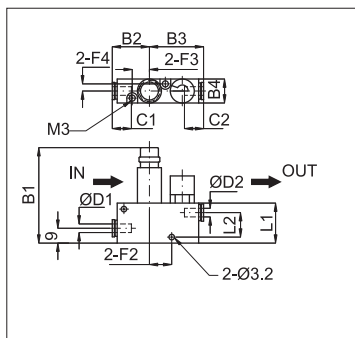
Series of unidirectional pressure regulators with reduced dimensions, provided with micropressure-gauge (with scale Mpa). They must be used to reduce working pressure directed to a specific element.

External tube $\varnothing$ (mm)	4	6	8
Code	04	06	08

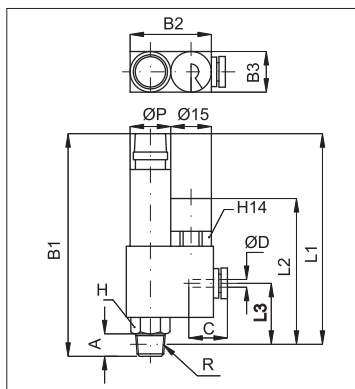
Threads	M5	1/8"	1/4"
Code	M5	18	14

How to order: V580618

V56	06	18
Type	Tube code	Thread or tube code



Code	Item	Tube $\varnothing$ D <sub>1</sub>	Tube $\varnothing$ D <sub>2</sub>	B <sub>1</sub>		B <sub>2</sub>	B <sub>3</sub>	B <sub>4</sub>	L <sub>1</sub>	L <sub>2</sub>	C <sub>1</sub>	C <sub>2</sub>	F <sub>1</sub>	F <sub>2</sub>	F <sub>3</sub>	F <sub>4</sub>	g
				Max	Min												
024357	V570404	4	4	63	69	22	33	15	25	15	11,5	11,5	17	15	10	4,5	47,5
024358	V570606	6	6			22,5	33,5										
024359	V570808	8	8	67,5	63,5	28,5	40,5	19	29	17	18,5	18,5	21	19,5	11,5	6,5	73



Code	Item	Tube $\varnothing$ D	R	A	B <sub>1</sub>		B <sub>2</sub>	B <sub>3</sub>	L <sub>1</sub>		L <sub>2</sub>	L <sub>3</sub>	$\varnothing$ P	C	H	g
					Max	Min			Max	Min						
024462	V5804M5	4	M5	3,5	57,5	53,5	27,5	15	54	50	42	12	11	11	8	27,5
024463	V580418		1/8"	8	81,5	77,5	36		77,5	73,5	51,5	18,5	15	15	12	54,5
024464	V5806M5	6	M5	3,5	57,5	53,5	28	15	54	50	42	12	11	11,5	8	27,5
024465	V580618		1/8"	8	81,5	77,5	36,5		77,5	73,5	51,5	18,5	15	17	12	54,5
024466	V580614		1/4"	11	89,5	85,5	39,5		19	83,5	79,5	57	22,5	19	16	83,5
024467	V580818	8	1/8"	8	81,5	77,5	36,5	15	77,5	73,5	51,5	18,5	15	18	12	55
024468	V580814		1/4"	11	89,5	85,5	39,5	19	83,5	79,5	57	22,5	19	16	83,5	

Technical data	
Fluid	Compressed air
Pressure range	1 ÷ 8 bar
Temperature range	0 °C ÷ + 60°C
Taper threads	UNI - ISO 7 / 1 (BSPT)
Metric threads	ISO R / 262
Connection tubes	Calibrated nylon, polyurethane and rilsan
Tube tolerances	± 0,05 mm
Materials	Body: Acetal resin Metal thread: Nickel plated brass Collet: Stainless steel Seals: Nitrile rubber (NBR)