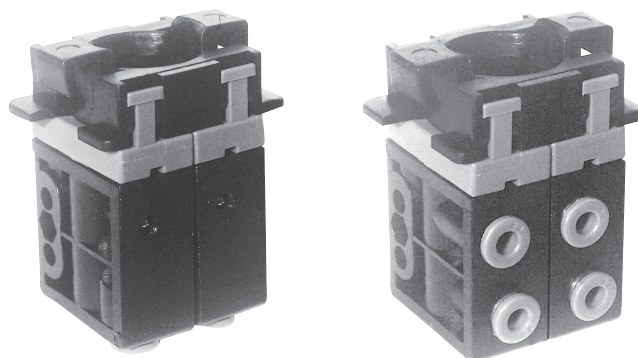


Microvalves ø 4 and manual operating devices

Microvalves ø 4, 5/2 normally open and normally closed

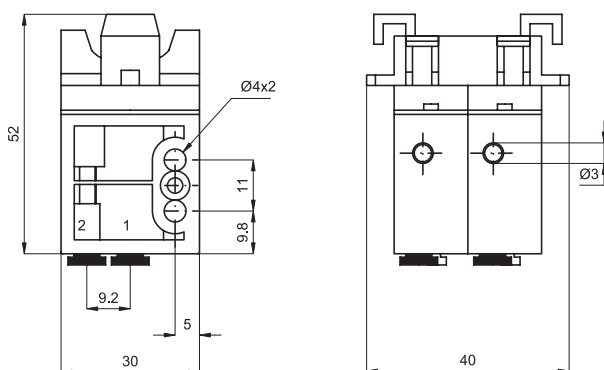


Executions			
Version	Symbol	Code	Item
5/2, 1 position		030261	AM041520
5/2, 1 position with side connections		030262	AM041520L

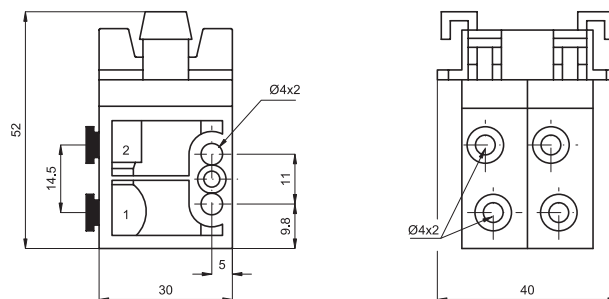


Series of poppet microvalves arranged for operating manually.
Connections with integral 4 mm push-in fittings.
According to the application you can choose between the version with bottom connections or with side ones.
For the choice of the operating device see page 2.265.1.

type: **AM041520**



type: **AM041520L**



Technical data

Fluid	Compressed filtered air with or without lubrication. Lubrication, if be used, must be continous.	
Pressure range	0 ÷ 8 bar	
Temperature range	-20 °C ÷ + 80 °C	
Operating force	10 N	
Flow	80 NI/min.	
Connections	With integral 4 mm push-in fittings	
Fixing	Through 2 holes (ø 4 mm) on the body	
	Through 1 hole (ø 22 mm) on panel (with operating device mounted)	
Mounting	In any position	
Materials	Body:	Acetal resin
	Seals:	Nitrile rubber (NBR)