

## Connection blocks type A, B, and C

Connection blocks are used to develop types HC, KA, MP, MPN, HK, HKF and HKL compact hydraulic power packs into a ready-for-connection solution. Compact control systems can be created by directly mounting valve banks to the connection blocks on type A (see "complete solutions in modular system").

### Features and benefits:

- Enables compact and sturdy direct mounting of ongoing components at the compact power packs of HAWE Hydraulik
- Intermediate plates enable versatile addition of other components
- Efficient and space saving solution for mounting individual valves or valve banks to single and dual circuit pumps
- Pressure and return filter, pressure limiting valves, switches etc. can be integrated

### Intended applications:

- Lifting devices
- Machine tools
- Modules for braking or rotor blade adjustment at wind power systems
- Tracking systems for solar panels and parabolic antennas



<b>Nomenclature:</b>	Connection blocks to the completion of hydraulic power packs
<b>Design:</b>	Add-on valve enabling pipe connection or direct mounting of valve banks
<b>p<sub>max</sub>:</b>	700 bar
<b>Q<sub>max</sub>:</b>	approx. 20 lpm

### Design and order coding example

AS3F2	/420	- G24
Solenoid voltage 12V DC, 24V DC, 230V AC		
Pressure setting (bar)		
Basic type	Type A, B, C see table	

### Options, type A, B, C

**Type A** with pressure-limiting valve (pre-set or manually adjustable, also with unit approval)

- For direct pipe connection
- To attach valve banks

#### Options:

- Check valve in P gallery
- Prop. pressure-limiting valve
- Return filter, Pressure filter
- Idle circulation valve (solenoid-actuated)
- Shut-off valve, accumulator charging valve

**Type B** with pressure-limiting valve to actuate single- and double-acting cylinders

- For direct pipe connection

#### Options:

- Check valve in P gallery
- Throttle for regulating the drain speed
- Idle circulation valve open or closed in neutral position
- Pressure switch in P gallery
- Automatic clamping and releasing via the pressure switch (type B..DW)

**Type C** without additional elements

- For direct pipe connection

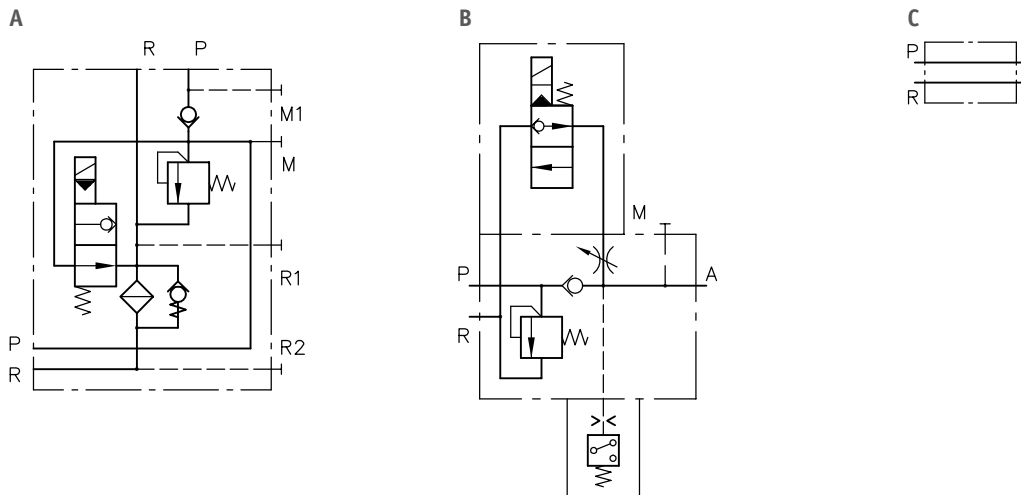
#### Options:

- For pipe connection (pump side) of all type A, B connection blocks  
(Type C15, C16 - connection block with hole pattern of the pump, type C36)

### Additional versions

- Connection blocks for dual-stage pumps
- Intermediate blocks for dual-stage pumps type S, V, C30
- Spacer plates for single and dual-circuit pumps type U.
- Additional intermediate block for second pressure stage type V, S

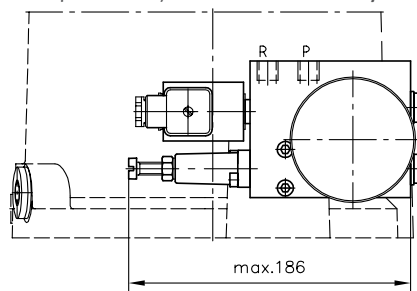
## Function



## General parameters and dimensions

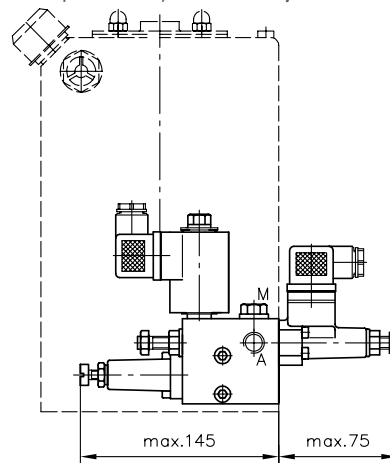
### AS ..

Example: HK 44/1 - H 2.08 - AS 3 F2/400 - G 24



### B..

Example: HC 14/1.95 - B 31/180 - EM 11V - 13/3 - G 24



### Associated technical data sheets:

- Type A etc.: [D 6905 A/1](#)
- Type AX: [D 6905 TÜV](#)
- Type B: [D 6905 B](#)
- Type C: [D 6905 C](#)

### Products with shared connection diagram:

- Two-stage valves type NE 21: [D 7161](#)
- Switch units type CR: [D 7150](#)
- Directional spool valves type SKC: [D 7230](#)
- Type SWC: [D 7450](#)

### Suited valve banks for combination:

- Type VB: [D 7302](#)
- Type BWH, BWN: [D 7470 B/1](#)
- Type BVZP: [D 7785 B](#)
- Type SWR, SWP, SWS: [D 7450](#), [D 7451](#), [D 7951](#)
- Type BA: [D 7788](#)
- Type BVH: [D 7788 BV](#)