

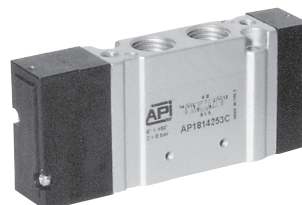
Electrically and pneumatically operated valves, sizes 15 and 18 mm

Size 18 mm, 5/3 pneumatic

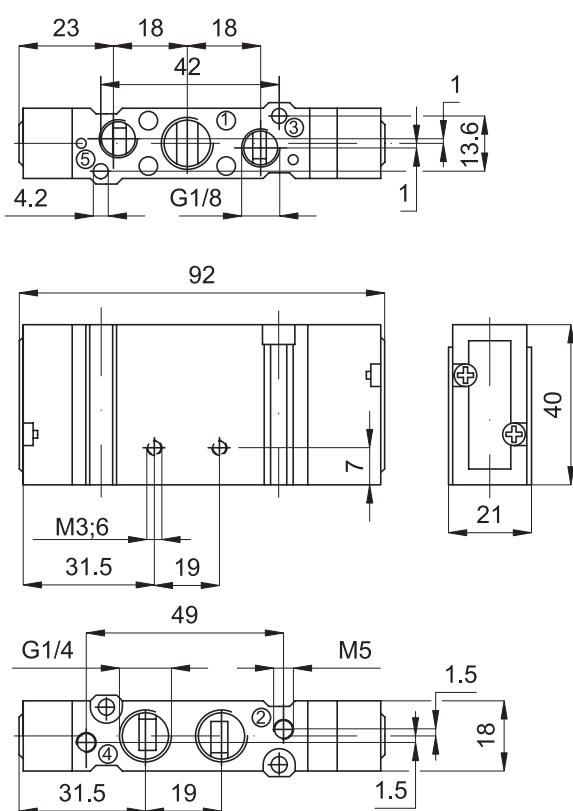


Executions			
Version	Symbol	Code	Item
1/4" ports, with closed centres		035291	AP1814253C
1/4" ports, with open centres		035301	AP1814253A
1/4" ports, with pressurised centres		035311	AP1814253P

Note: The fixing screws for mounting on sub-base are included in the base kit.



type: **AP1814253...**



Series of spool valves with reduced dimensions.
The ports are available in various configurations for mounting on base or single use; in case of single use the relevant fixing plate must be applied.

For the fixing plate type PF 1518 see page 2.20.1.
For the sub-bases type SB18.. see page 2.40.1.

The air piloting ports are M5 threaded.

The exhausts are 1/8".

Technical data	
Fluid	Compressed filtered air with or without lubrication. Lubrication, if be used, must be continous.
Pressure range	2 ÷ 8 bar
Temperature range	-5 °C ÷ + 50°C
Orifice	8 mm
Flow	700 NI/min
Mounting	In any position
Materials	<div>Body: Die-cast aluminium</div> <div>Heads: Acetal resin</div> <div>Seals: Nitrile rubber (NBR)</div>