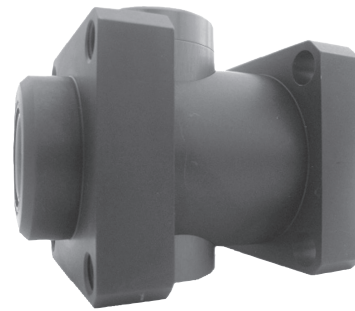


Standard executions		
Version	Symbol	Type
Normally closed		ABS....CRD
Normally open		ABS....ARD



Series of locking rod units for cylinders DIN ISO 6431 and VDMA 24562 with pneumatic releasing and rod mechanical locking obtained through a double jaw (the locking is pneumatic in the type normally open).

For the application of the locking rod unit to a cylinder IDIN ISO 6431 and VDMA 24562 it is necessary to order the cylinder with the rod arranged for this (the extended one in hardened steel, option B; see page 1.5.1).

Used in applications when compressed air failure would present hazardous cylinder movement.

How to order: ABS0050CRD

ABS	050	CRD
Type	Cylinder bore	Option

For standard items, codes and dimensions see tables page 1.75.15.

Technical data	
Fluid	Compressed filtered air with or without lubrication
Pressure range	4 ÷ 8 bar
Temperature range	-10 °C ÷ + 80°C
Materials	Body: Anodised aluminium Jaws: Brass Seals: Nitrile rubber (NBR) Locking cylinder: Anodised aluminium

Cylinder bore (mm)	Locking force (N)
32	650
40	1100
50	1600
63	2500
80	4000
100	6300
125	8700

The locking force refers to static load; slidings can happen exceeding the maximum indicated values.

The locking rod unit must be unclamped only when both chambers of the cylinder are in pressure, otherwise the cylinder rod could move not uniformly and this could cause a damage to the application.

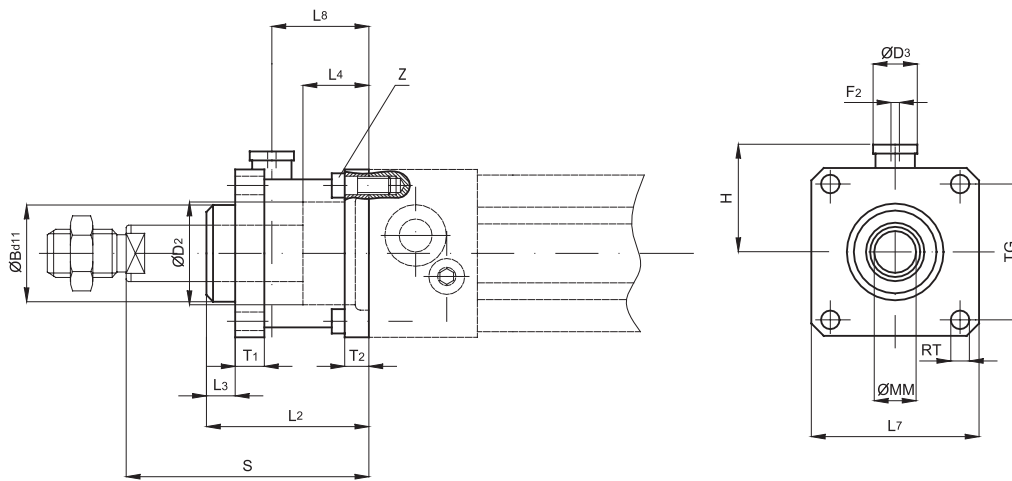
Seal kits not available.

# Piston-rod brake for Cylinders DIN ISO 6431 and VDMA 24 562

## Bores from 32 to 125 mm



type: **ABS**



For cylinder ø mm	B ø	D <sub>2</sub> ø	D <sub>3</sub> ø	F <sub>2</sub>	H	L <sub>2</sub>	L <sub>3</sub>	L <sub>4</sub>	L <sub>7</sub>	L <sub>8</sub>	MM ø	RT	T <sub>1</sub>	T <sub>2</sub>	TG	Z	S
32	30	30,5	20	M5	25,5	58	10	20,5	45	31,5	12	M6	13	8	32,5	M6x20	74
40	35	35	24	1/8"	30	65	10	22,5	50	36	16	M6	13	8	38	M6x20	85
50	40	40	30	1/8"	36	82	12	29,5	60	45,5	20	M8	16	15	46,5	M8x30	107
63	45	45	38	1/8"	40	82	12	29,5	70	49,5	20	M8	16	15	56,5	M8x30	107
80	45	45	48	1/8"	50	110	20	35	90	61	25	M10	20	18	72	M10x35	136
100	55	55	48	1/8"	58	115	23	39	105	65	25	M10	20	18	89	M10x35	143
125	60	60	65	1/8"	80	167	45	51	140	86,5	32	M12	30	22	110	M12x40	187

### Normally closed

Code	Item	For cylinder ø mm
042001	ABS 032CRD	32
042002	ABS 040CRD	40
042003	ABS 050CRD	50
042004	ABS 063CRD	63
042005	ABS 080CRD	80
042006	ABS 100CRD	100
042007	ABS 125CRD	125

### Normally open

Code	Item	For cylinder ø mm
042011	ABS 032ARD	32
042012	ABS 040ARD	40
042013	ABS 050ARD	50
042014	ABS 063ARD	63
042015	ABS 080ARD	80
042016	ABS 100ARD	100
042017	ABS 125ARD	125