

Pressure switches type DG

Pressure switches close or open electrical contacts when under pressure. They are used to issue an electrical switching command or signal for further operations when a predefined pressure value is reached.

Different versions (with pressure setting on an adjusting knob, main and secondary switch, screw-on pressure switch) enable their use in a wide range of applications. A design-related difference (hysteresis) of 8... 20% is to be expected between the upper and lower switching point in piston-type pressure switches.

In contrast to this, the type DG5E and DG6 electronic pressure switches provide the option to select two independent pressure switching points and/or program or adjust the hysteresis.

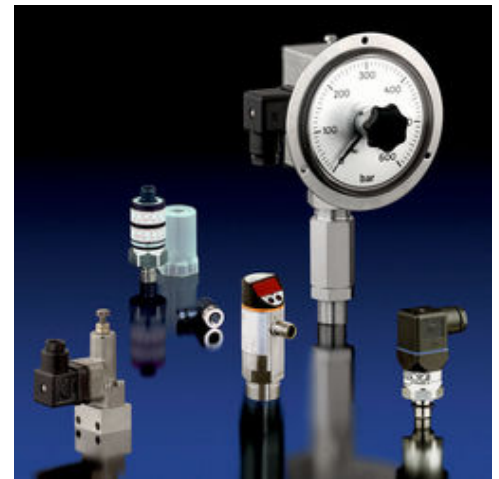
Type DT is an analogous pressure sensor.

Features and benefits:

- Compact design
- Option of integration into the HAWE modular system
- Operating pressures up to 1000 bar

Intended applications:

- General hydraulic systems
- Machine tools



Nomenclature:	Spring loaded piston type pressure switch Electronic pressure switch Pressure transducer
Design:	Screw-in version Manifold mounting Designed for pipe fittings
p_{max}:	0... 1000 bar

Design and order coding example

DG 1	RF	
DG 35	V	-YS 8

Hydraulic connection

- With various tapped journals or to be mounted at fittings (type DG 3..)
- Combination with various fittings

Means of adjustment, mounting

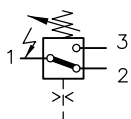
- Manually adjustable (R) or Turn-knob (V, H = with lock) (type DG 3..)
- Design with bezel for installation in control panels (F)

Basic type

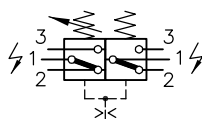
Pressure switch type DG
Type DG 1, 3, 8 (spring loaded piston type switch)
Type DG 5, DG 6 (Electronic pressure switch with two switch points)
Operating voltage 12 V DC, 24 V DC, 110 V AC, 230 V AC
Analogous pressure transducer type DT
Type DT 11
Type DT 2

Function

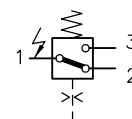
DG 1 R



DG 8

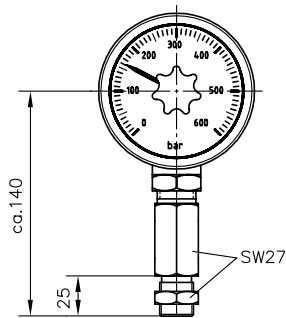


DG 3...

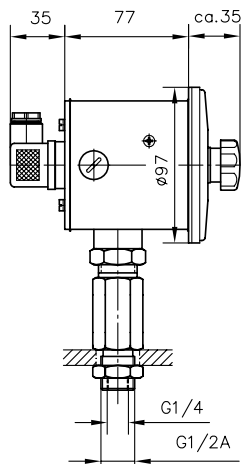


General parameters and dimensions

DG 1 R



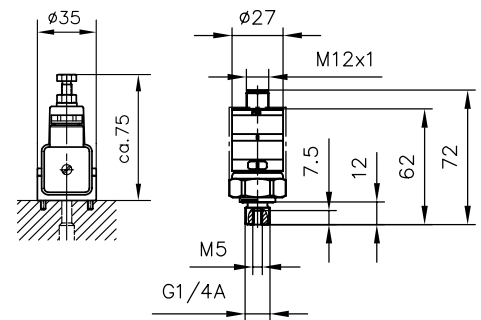
DG 8



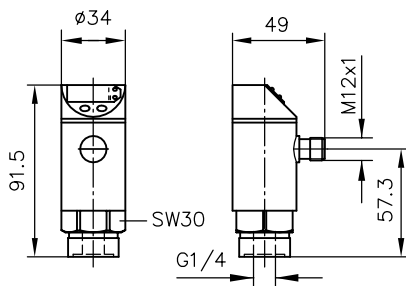
DG 3 ..



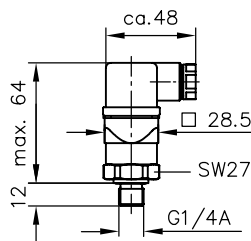
DG 6.



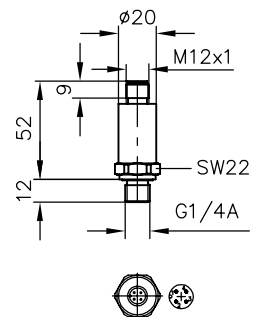
DG 5 E



DT 11



DT 2



	Brief description	Adjustable pressure p_{max} [bar] ¹⁾	Ports (BSPP)	m [kg]
DG 1 R	Adjustment via turn-knob at the dial	20 ... 600	G 1/2 or G 1/4 A	1,3
DG 8	Version with two pressure switches Main switch: Adjustment via turn-knob at the dial Secondary switch: Adjustment via set screw	20 ... 600 and 20 ... 180	G 1/2 or G 1/4 A	1,35
DG 3..	Compact design for manifold mounting Adjustment via set screw	4 ... 700	G 1/4 or G 1/4 A ²⁾	0,3
DG 5 E	Electronic pressure switch with two switch points	0 ... 600	G 1/4 A	0,25
DG 6..		0 ... 400	G 1/4 A or M 5	0.08
DT 11	Analogous pressure sensor	0 ... 1000	G 1/4	0,08
DT 2		0 ... 600	G 1/4	0,7

1) The max. operation pressure of 700 bar is not influenced by the max. set pressure

2) For versions with adapter only

Associated technical data sheets:

- Pressure switches type DG: [D 5440](#)
- Electronic pressure switch type DG 5 E: [D 5440 E/1](#)
- Electronic pressure switch type DG 6: [D 5440 F](#)

Hydraulic accessories:

- Fittings type X, X 84: [D 7065](#), [D 7077](#)

Similar products:

- Analogous pressure sensor type DT 11: [D 5440 T/2](#)
- Analogous pressure sensor type DT 2: [D 5440 T/1](#)