

Check valves with hydraulic release type HRP

The check valves type HR with hydraulic release, are designed as manifold mounting valves and are available in six sizes. These valves are used in hydraulic circuits with design related, leaking directional valves, as hydraulically actuated drain, or idle circulation valves. The check valve type HRP can be ordered also with a pre-release to suppress decompression surges for circuits with high pressure and high consumer flows.

This valve is extremely tolerant to residual pressure in the return duct (port B), as the rear side of the actuation piston is de-pressurised via a drain port.

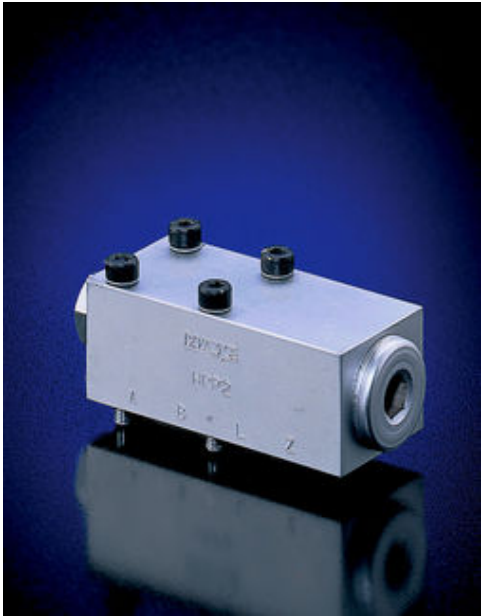
Another option allows opening of the check valve via the load pressure on the consumer side, controlled by a flange-mounted solenoid valve.

Features and benefits:

- Manifold mounting valve for max. pressure 700 bar
- Flows up to 400 lpm
- Electrically controlled
- With pre-release for smooth switching

Intended applications:

- Industrial and mobile hydraulics



Nomen-clature:	Check valve with hydraulic release
Design:	Manifold mounting valve
Actuation:	Hydraulic Electro-hydraulic
p _{max} :	700 ... 500 bar
Q _{max} :	20 ... 400 lpm

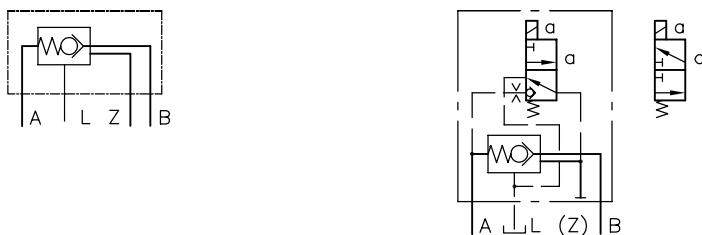
Design and order coding example

HRP 4 V - B 0,4 - WH 1H B 0,4-G24

			Optionally with directly mounted 3/2-way directional seated valve	For arbitrary open-up or for use as 2/2-way directional seated valve
			Optionally with orifice insert at control port Z	For preventing decompression surges
Function	Without pre-release (-) With pre-release (V)			
Basic type, size	Check valve with hydraulic release HRP, size 1 to 7			

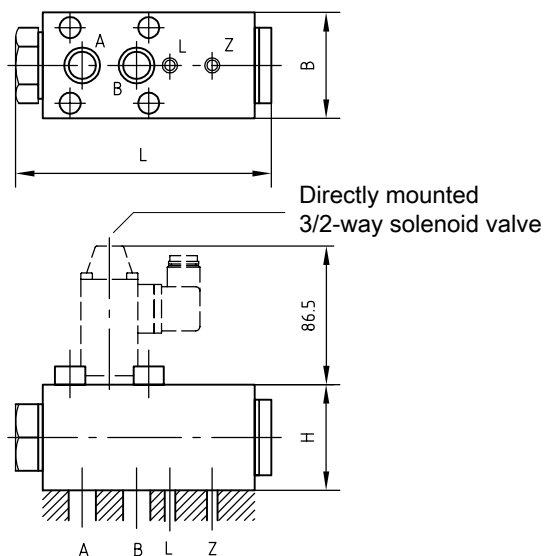
Function

HRP



General parameters and dimensions

HRP



	Q_{\max} [lpm]	p_{\max} [bar]	Release ratio p_A / p_Z	Dimensions [mm]			m [kg]
				H	B	L	
HRP 1	20	700	2.9	20	25	74.5	0.25
HRP 2	35	700	3.9	25	30	78	0.4
HRP 3	50	500	4.3	35	35	83	0.7
HRP 4	80	500	3.8	35	50	103.5	1.2
HRP 5	140	500	4.0	40	60	120.5	1.9
HRP 7 V	400	500	3.0	63	100	190	8.0

Associated technical data sheets:

- Releasable check valves type HRP: [D 5116](#)

Similar products:

- Releasable check valves type RH: [D 6105](#)
- Releasable check valves type RHV: [D 3056](#)
- Releasable check valves type CRH, RHC: [D 7712](#), [D 7165](#)
- Releasable twin check valve type DRH: [D 6110](#)