

Screw-in check valves with hydraulic release type CRH and RHC

The screw-in check valves with hydraulic release type CRH and RHC are used in hydraulic circuits together with design related, leaking directional valves, as a hydraulically actuated drain, or idle circulation valves.

The valves type RHC with and without pre-release (for high pressures and large consumer volumes) are designed as insert valves. The mounting hole (also sealing surface) is to be machined with a standard twist drill (point angle 118°).

Different variants extend the range of applications.

The type CRH is a screw-in valve for very easily machined mounting holes.

Features and benefits:

- Cartridge valve
- Pressures up to 700 bar
- Flows up to 200 lpm
- Sturdy

Intended applications:

- Industrial hydraulics
- Construction machinery



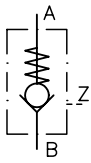
Nomenclature:	Check valve with hydraulic release
Design:	Valve insert Screw-in valve
Actuation:	Hydraulic
p_{max}:	500 ... 700 bar
Q_{max}:	8 ... 200 lpm

Design and order coding example

CRH 3	V
Function	Without pre-release (-) With pre-release (V)
Basic type, size	Screw-in check valve with hydraulic release Type CRH, size 1 to 3 and Type RHC, size 1 to 6
Additional versions:	<ul style="list-style-type: none"> ■ With increased release ratio (approx. 4.2 : 1) ■ With sealed tapped journal and control piston ■ With hydraulic relieve of the control piston (type RHCE)

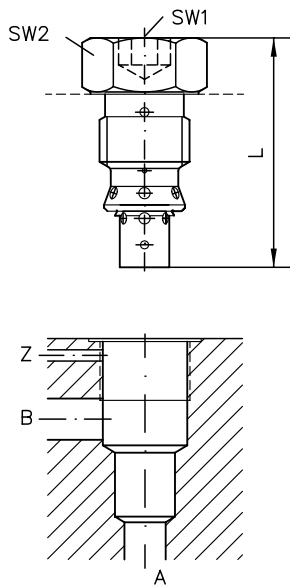
Function

CRH, RHC

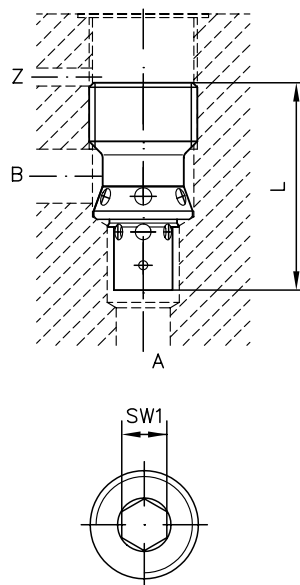


General parameters and dimensions

CRH



RHC



	Q_{\max} [lpm]	p_{\max} [bar]	Release ratio	Ports (BSPP)	Dimensions			m [g]
			p_a / p_z		L [mm]	SW = a/f 1	SW = a/f 2	
CRH 1	30	500	2.6	M 16 x 1.5	47	SW 8	SW 22	60
CRH 2	50	500	2.6	M 20 x 1.5	53	SW 10	SW 24	90
CRH 3	80	500	2.5	M 24 x 1.5	61	SW 12	SW 30	150
RHC 1	15	700	2.6	M 16 x 1.5	32	SW 6	-	20
RHC 2	25	700	2.6	M 20 x 1.5	37.5	SW 8	-	40
RHC 3	55	700	2.5	M 24 x 1.5	47	SW 10	-	70
RHC 4	100	500	2.5	M 30 x 1.5	56	SW 12	-	140
RHC 5	150	500	2.8	M 36 x 1.5	67.5	SW 14	-	250
RHC 6	200	500	2.5	M 42 x 1.5	97	SW 19	-	500

Associated technical data sheets:

Check valves with hydraulic release type:

- Type CRH: [D 7712](#)
- Type RHC: [D 7165](#)

Similar products:

- Type RHV: [D 3056](#)
- Type HRP: [D 5116](#)
- Type RH: [D 6105](#)