

Check valves type RK/RB, RC, RE, and ER

Check valves type RK, RB, RC, RE and ER are used to block the flow in one direction and enable free flow in the opposite direction. RK/RB check valves are spring-loaded, sturdily designed and dirt-resistant ball seated valves.

The screw-in check valves type RC may be installed in both directions with the spring-loaded valve shim enabling rapid switching sequences. The check valve type RE is a shim-type check valve without spring pre-load. This enables a very compact and simple method of blocking the oil flow in one direction. This valve can be used as a "foot valve" in the suction pipe of pumps, for example.

The mounting hole for all screw-in check valves can be easily machined with a standard twist drill (point angle 118°).

The insert check valves type ER feature a spring-loaded, ball seated design and are primarily used in manifold-mounted versions of seated valves.

Features and benefits:

- Operating pressures up to 700 bar
- Easily machined mounting holes
- Sturdy

Intended applications:

- General hydraulic systems
- Hydraulic pre-loading



Nomenclature:	Check valve
Design:	Screw-in valve Valve insert With housing for in-line installation
p_{max}:	400...700 bar
Q_{max}:	6...320 lpm

Design and order coding example

RC 2 - E

Design with housing For pipe connection (E, F, G), type RK, RB and RC

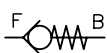
Basic type, size Screw-in check valve
 Type RK, RB, size 0 ... 4
 Type RC, size 1 ... 3
 Type RE, size 0 ... 4
 Type RE, ER (check valve insert), size 0 to 4

Additional versions:

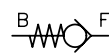
- Type RK with increased open-up pressure
- Type ER, stainless (size 01 ... 31)
- Type RK, RB, RC and RE with metric thread

Function

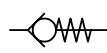
RK
Ball seated valves



RB

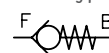


ER



RC

Shim type valves

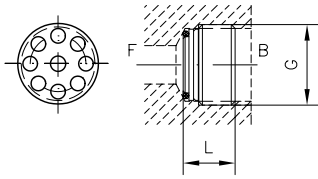


RE

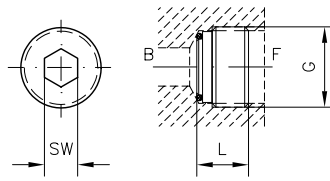


General parameters and dimensions

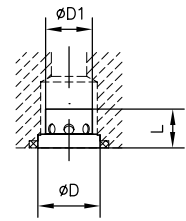
RK..



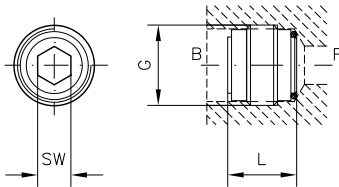
RB..



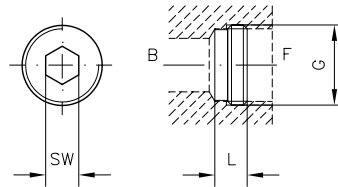
ER..



RC..



RE..



	Q _{max} [lpm]	p _{max} [bar]	Ports (BSPP)	Dimensions [mm]		m [g]
RK 0/RB 0	10	700	G 1/8 A	7.2/7.9	SW 5	5
RK 1/RB 1	20	700	G 1/4 A	9/10.3	SW 7	5
RK 2/RB 2	50	700	G 3/8 A	11.2/11.7	SW 6	15
RK 3/RB 3	80	500	G 1/2 A	13.5/13.2	SW 8	15/20
RK 4/RB 4	120	500	G 3/4 A	17.5/17.5	SW 12	35/40
RK 6	320	300	G 1 1/4	55	-	135
RC 1	20	700	G 1/4 A	13	SW 4	6
RC 2	35	700	G 3/8 A	15	SW 5	13
RC 3	60	500	G 1/2 A	18	SW 8	24
RE 0	12	500	G 1/8 A	5	SW 4	2
RE 1	25	500	G 1/4 A	6	SW 5	4
RE 2	40	500	G 3/8 A	7	SW 8	6
RE 3	70	450	G 1/2 A	7.5	SW 10	10
RE 4	120	400	G 3/4 A	9	SW 12	18
				L	D/D1	m[g]
ER 0	6	500	G 1/8 A	5.6	6.1/4.6	0.5
ER 1	12	500	G 1/4 A	5.6	8.6/6.5	1
ER 2	30	500	G 3/8 A	8	14/10.5	5
ER 3	65	500	G 1/2 A	10	17/13	9
ER 4	120	400	G 3/4 A	17.5	28/21	40

Associated technical data sheets:

- Insert check valves type ER: [D 7325](#)
- Check valves type RE: [D 7555 R](#)
- Check valves type RC: [D 6969 R](#)
- Check valves type RK, RB: [D 7445](#)

- Restrictor check valves type EB, BE, BC: [D 6465](#), [D 7555 B](#), [D 6969 B](#)

Similar products:

- Check valves type CRK, CRB: [D 7712](#)
- Check valves type B: [D 1191](#)