

Throttles and restrictor check valves type CQ, CQR, and CQV

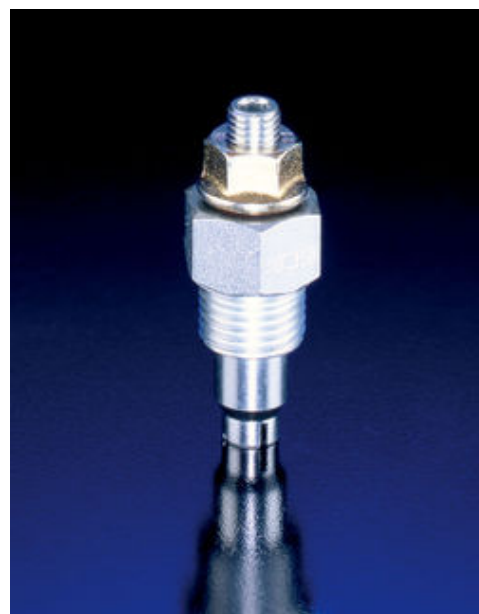
The throttles type CQ, CQR and CQV are metering valves and are used to influence the flow in single and double-acting consumers. The throttles described here are designed as slot-type throttles and are therefore impervious to micro-contaminants (no edge filter effect). The check valve function of types CQR and CQV is performed by a shim that guarantees short response times. The double spindle seal enables leakage-free adjustment, even under pressure.

Features and benefits:

- Leak-free adjustment under pressure
- Operating pressure up to 700 bar

Intended applications:

- Speed regulation in hydraulic lifting devices



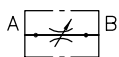
Nomenclature:	Throttle Restrictor check valves
Design:	Screw-in valve
Adjustment:	Tool adjustable Manually
p_{max}:	700 bar
Q_{max}:	50 lpm

Design and order coding example

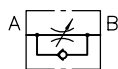
CQV 2	- D	- 1/4	
			Single connection blocks
			<ul style="list-style-type: none"> ■ For pipe connection (1/4, 3/8) ■ Manifold mounting (in combination with type CQ and CQV only)
			Adjustability in operation
			<ul style="list-style-type: none"> ■ Without labelling = tool adjustable ■ D = Turn knob (with lock nut) ■ D3 = Turn knob, diameter 35 mm (without lock nut)
Basic type, size	Type CQ, type CQR, type CQV, size 2 Slot-type throttles, available with or without built-in check valve		
	<ul style="list-style-type: none"> ■ Version with precision control range (size 22) ■ Version with pressure compensator (flow control function) 		

Function

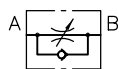
CQ 2, CQ 22



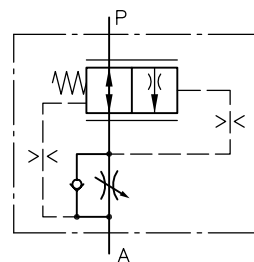
CQR 2, CQR 22



CQV 2, CQV 22

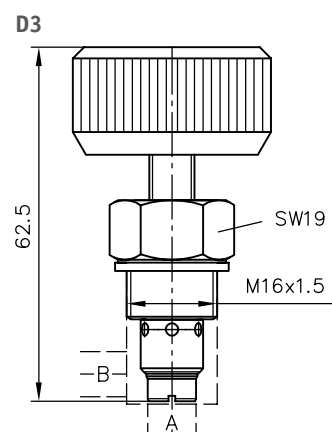
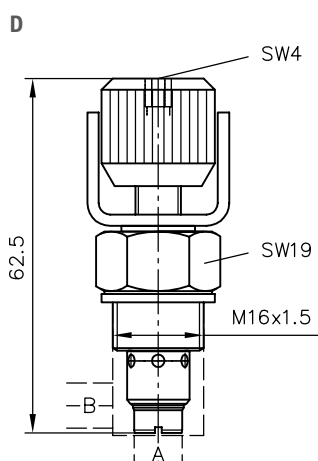
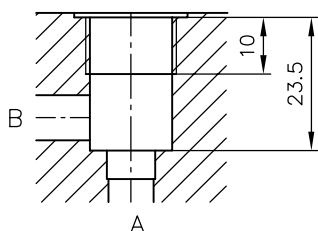
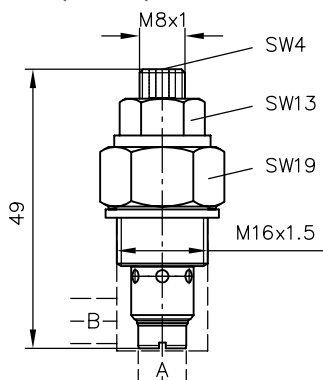


CQ 2 - P - DW



General parameters and dimensions

CQ 2., CQR 2., CQV 2.



	Q_{\max} [lpm]	p_{\max} [bar]
CQ 2 / CQ 22	50 / 20	700
CQR 2 / CQR 22		
CQV 2 / CQV 22		

Associated technical data sheets:

- Throttle and restrictor check valves
type CQ, CQR, CQV: [D 7713](#)

Similar products:

- Throttle and restrictor check valves
type ED, RD and RDF: [D 7540](#), [D 2570](#)
- Throttles type Q, QR, QV, FG: [D 7730](#), [D 7275](#)