

Circulation valve type CNE

The pressure controlled 2-way directional valve automatically switches one (low pressure) of two circuits feeding a hydraulic system into idle circulation as soon as the adjusted pressure is achieved or exceeded by the high pressure circuit. The valve is retained in this shifting position, enabling idle circulation, via the higher pressure being picked up and transmitted by a control oil duct. This valve also serves as a pressure limiting valve for the low pressure circuit.

Contrary to version CNE 2, CNE 21 features an additional thread seal and CNE 22 and 23 a thread seal plus a piston seal.

The idle circulation valves type CNE are screw-in valves where the mounting hole can be easily manufactured.

Features and benefits:

- Compact design
- Easily produced mounting hole

Intended applications:

- Accumulator charged systems
- Jigs

Nomenclature:	2-way circulation valve
Design:	Screw-in valve
Adjustment:	Tool adjustable
p_{max}:	500 bar
p_{max adjust}:	450 bar
Q_{max}:	30 lpm

Design and order coding example

CNE 2	C	- 50
-------	---	------

Pressure setting [bar]

Pressure range

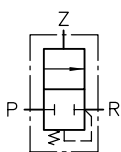
Basic type, size Pressure controlled 2-way valve type CNE

Additional versions:

- Additionally sealed tapped journal to minimize the internal leakage loss (type CNE 21)
- Additionally sealed tapped journal and piston to minimise leakage loss (type CNE 22 and CNE 23)

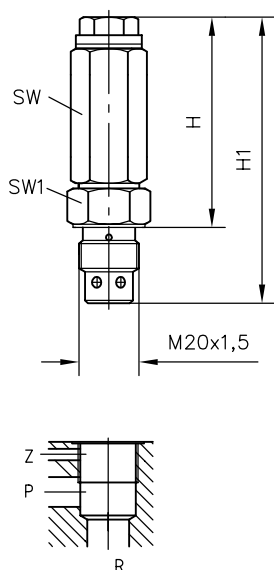
Function

CNE



General parameters and dimensions

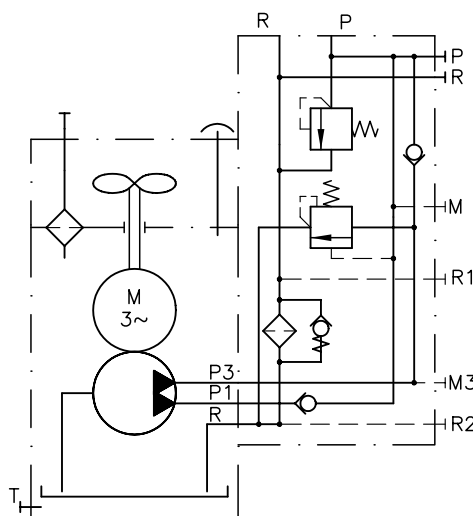
CNE 2



Order example:

HK448/1-HH..-AN21F2

Circulation valve integrated in connection block type AN 21 F2 for compact hydraulic power packs type HK with two pump circuits



	Q_{\max} [lpm]	Oper. pressure p_{\max} [bar] with		Dimensions [mm]			
		P	Z	H	H1	SW = a/f	SW1
CNE 2	30	E: 30	500	70	96	22	24
CNE 21		D: 45					
CNE 23		C: 60					
		B: 75					
		A: 90					
		M: 120					
		L: 150					
CNE 22	30	C: 320	500	120	147	30	27
		B: 450					

Associated technical data sheets:

- Idle circulation valves type CNE: [D 7710 NE](#)

Similar products:

- Two-stage valves type NE: [D 7161](#)
- Switch units type CR: [D 7150](#)
- Shut-off valves type LV, ALZ: [D 7529](#), [D 6170-ALZ](#)
- Switching valves type AE: [D 6170](#)

Connection blocks:

- Two-stage connection blocks type NA: [D 6905 A/1](#)
- Connection blocks type AN, AL: [D 6905 A/1](#)