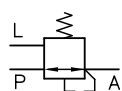
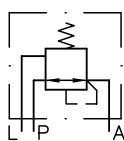


Function

ADM..

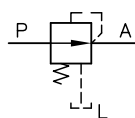


Valve for pipe connection

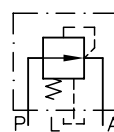


Manifold mounting valve

VDM..



Valve for pipe connection



Manifold mounting valve

General parameters and dimensions

ADM 22 DR

Directly controlled pressure reducing valve type ADM size 2,
for pipe connection

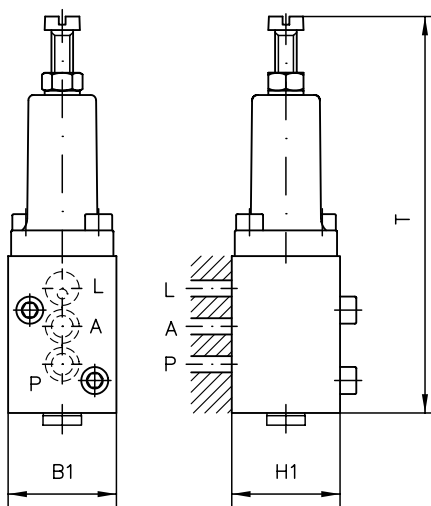
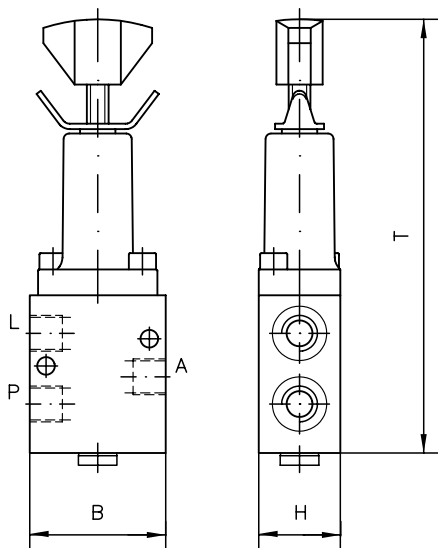
(tapped ports G 3/8 (BSPP), coding 2),
pressure range 30 to 120 bar (coding D),
pressure manually adjustable (coding R)

Directly controlled pressure-reducing valve type ADM, size 2
for pipe connection

(ports G 3/8 (BSPP), coding 2),
Pressure range 30 to 120 bar (coding D),
Manually adjustable pressure (coding R)

ADM...P

Manifold mounting valve

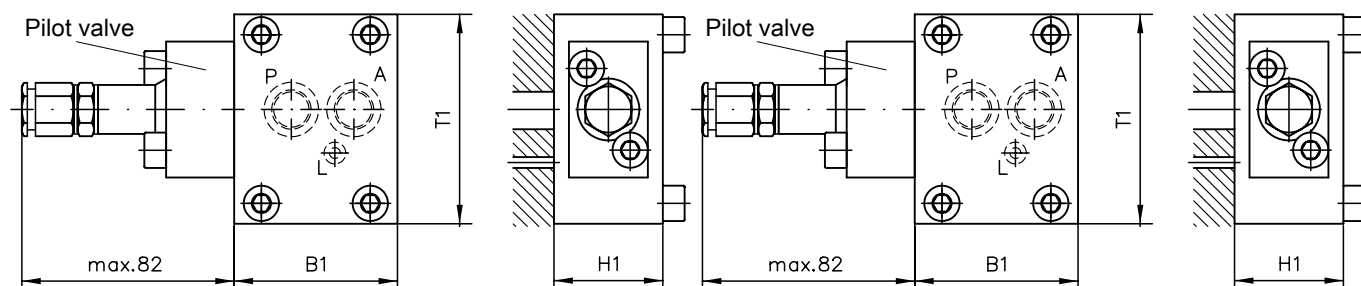


VDM...G

Valve for pipe connection

VDM 5 PH - 250

Piloted pressure reducing valve type VDM size 5,
 manifold mounting (coding P),
 pressure range 10 to 400 bar (coding H),
 pressure tool adjustable to 250 bar
 Piloted pressure-reducing valve type VDM, size 5
 for manifold mounting (coding P),
 pressure range 10 to 400 bar (coding H),
 tool adjustable pressure to 250 bar



| | Q_{\max} [lpm] | p_{\max} [bar] | $p_{\max A}$ [bar] | Ports (BSPP) ²⁾ | Leakage flow Q_{leak} [lpm] | Dimensions [mm] | | | | | | m_{\max} [kg] ³⁾ |
|----------|---------------------|---------------------|-------------------------------------|-------------------------------|---|--------------------|----|----|----|-----|----|----------------------------------|
| | | | | | | H | H1 | B | B1 | T | T1 | |
| ADM 1... | 12 | 300 | F: 30 D: 120 C: 160 A: 250 | G 1/4 | approx. <0.05 | 30 | 35 | 45 | 35 | 141 | - | 0.6/0.6 |
| ADM 2.. | 25 | | | G 1/4, G 3/8 | approx. <0.05 | 30 | 40 | 50 | 40 | 162 | - | 0.7/0.85 |
| ADM 3.. | 60 | | F: 25 D: 100 C: 160 A: 250 | G 3/8, G 1/2 | approx. <0.07 | 30 | 40 | 50 | 40 | 174 | - | 1.0/1.1 |
| VDM 3.. | 40 | 400 | N: 100 H: 400 ¹⁾ | G 1/2 | approx. <0.4 | 30 | - | 60 | - | 66 | - | 1.1/-- |
| VDM 4.. | 70 | | | G 3/4 | | 40 | 40 | 65 | 60 | 71 | 78 | 1.5/2.0 |
| VDM 5.. | 120 | | | G 1 | | 50 | 50 | 80 | 88 | 73 | 81 | 2.0/2.5 |

1) Max. pressure difference is 300 bar between inlet and outlet

2) Design for pipe connection

3) Version for pipe connection / manifold mounting

HK 43 LDT/1 M - ZZ 2.7/9.8

- Pressure-reducing valves type ADM: [D 7120](#)
- Pressure-reducing valves type VDM, VDX: [D 5579](#)

- Miniature pressure-reducing valves type ADC etc.: [D 7458](#)
- Miniature prop. pressure-reducing valves type PM, PMZ: [D 7625](#)

- Pressure-reducing valves type CDK: [D 7745](#)
- Prop. pressure-reducing valves type PDM: [D 7486](#), [D 7584/1](#)