

Shut-off valves type DA and EA

The shut-off valves types DA and EA are of ball seated design and are available in two sizes. They are used in hydraulic systems for blocking the flow in one or both directions. They are available with hand lever or with eccentric shaft for customer furnished hand lever. Both versions can be ordered either with or without detent.

Features and benefits:

- Zero leakage blocking of a hydraulic line
- Pressures up to 500 bar manually switchable
- Flows up to 150 lpm
- Single or double-blocking

Intended applications:

- Rolling mill equipment
- Shipbuilding
- Construction and construction materials machinery
- Mining machinery



Nomenclature:	Directional seated valve, zero leakage
Design:	Individual valve for pipe connection
Actuation:	Manual
p_{max}:	500 bar
Q_{max}:	60 ... 150 lpm

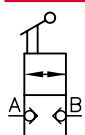
Design and order coding example

EA 3

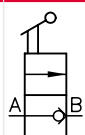
Basic type, size Type DA (doppeltwirkend) size 2, 3, Typ EA (einfachwirkend), size 2, 3

Function

DA 2

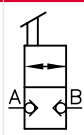


EA 2

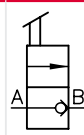


With hand lever

DA 2B

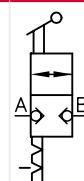


EA 2B

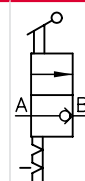


Without hand lever

DA 3



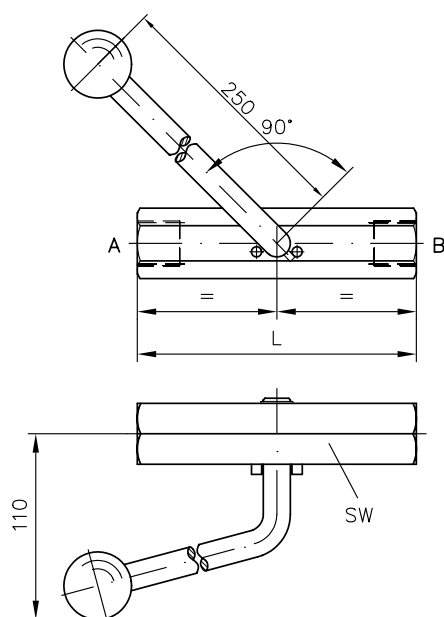
EA 3



Hand lever with detent

General parameters and dimensions

DA 3



	Q_{\max} [lpm]	p_{\max} [bar]	Ports (BSPP)	Dimensions [mm]		m [kg]
			A, B	L	SW = a/f	
DA 2, EA 2	60	500	G 3/4	165	SW 36	1.3 - 1.5
DA 2B, EA 2B	60	500	G 3/4	165	SW 36	1.3 - 1.5
DA 3, EA 3	150	500	G 1	200	SW 50	3.0 - 3.2

Associated technical data sheets:

- Shut-off valves type DA, EA: [D 1741](#)

Similar products:

- Directional seated valves type VH, VHR, VHP: [D 7647](#)