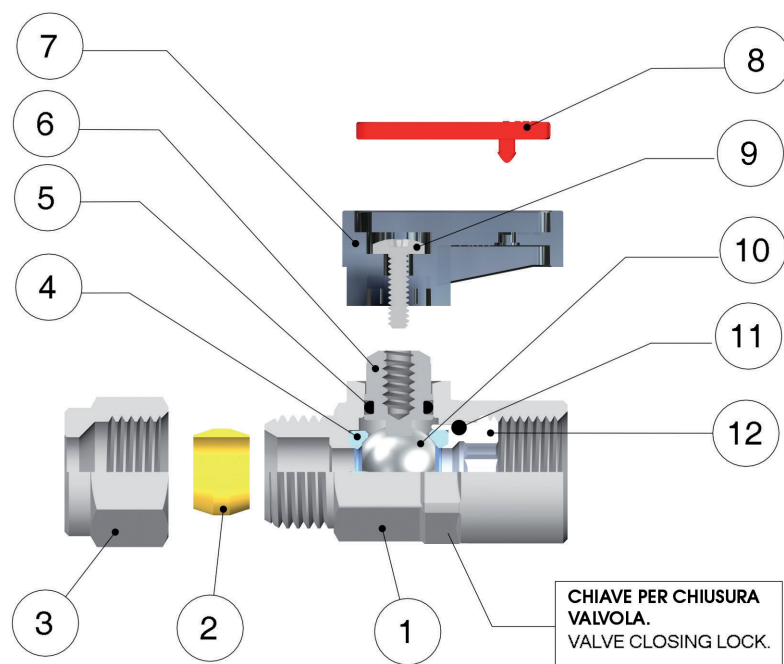


Caratteristiche Tecniche / Technical Characteristics


**FKM A RICHIESTA
IF REQUESTED FKM**

BS EN 331:1998

**Tested by GL to
BS EN 331:1998**

CHIAVE PER CHIUSURA
VALVOLA.
VALVE CLOSING LOCK.

Materiali e Componenti / Component Parts and Materials

- | | |
|---|---|
| 1 Corpo in Ottone cromato | 1 Chrome Nickel-plated Brass Body |
| 2 Ogiva in Ottone (PTFE a richiesta) | 2 Brass Olive (if Requested PTFE) |
| 3 Dado in Ottone cromato | 3 Chrome Nickel-plated Brass Nut |
| 4 Guarnizione sede sfera in PTFE | 4 PTFE Seats |
| 5 Guarnizione O-RING in NBR 70 (FKM a richiesta) | 5 NBR 70 Seal O-RING (FKM if required) |
| 6 Albero in Ottone cromato | 6 Chrome Nickel-plated Brass Spindle |
| 7 Maniglia in PA66 Caricato vetro | 7 PA66 Glass reinforced Handle |
| 8 Piastrina in Resina Acetalica | 8 Acetalic resin Plate |
| 9 Vite in acciaio | 9 Steel Screw |
| 10 Sfera in Ottone cromato | 10 Chrome Nickel-plated Brass Ball |
| 11 Guarnizione O-RING in NBR 70 (FKM a richiesta) | 11 NBR 70 Seal O-RING (FKM if required) |
| 12 Ghiera o raccordo in Ottone | 12 Brass Fitting |

Pressioni / Pressures

Pressione minima / Minimum Pressure: -0.99 bar (-0.099MPa)
Pressione massima / Maximum pressure: 20 bar (2 MPa)

Filettature / Threads

Gas conica conforme ISO 7.1, BS 21, DIN 2999
Tapered gas in conformity with ISO 7.1, BS 21, DIN 2999.
Gas cilindrica conforme ISO 228 Classe A
Parallel gas in conformity with ISO 228 Class A.

Tubi di collegamento / Connection Tubes

Tubi in rame, tubi metallici in genere, raccorderia varia.
PA6, PA11, PA12, Polietilene, *Poliuretano, PTFE, FEP utilizzando
l'apposita bussolina di rinforzo (art. 10770).
*Per tubi in Poliuretano é consigliata una durezza di 98 shore.

Tubes made in copper, metal in general and various fittings.
PA6, PA11, PA12, Polyethylene, *Polyurethane, PTFE, FEP with
an inside support bush art 10770.
*For Polyurethane hoses it is required a minimum hardness of
98 shore.

Temperature / Temperatures

Temperatura minima / Minimum temperature: -20 °C
Temperatura massima / Maximum temperature: +80 °C

Con Guarnizioni FKM / With FKM Seals

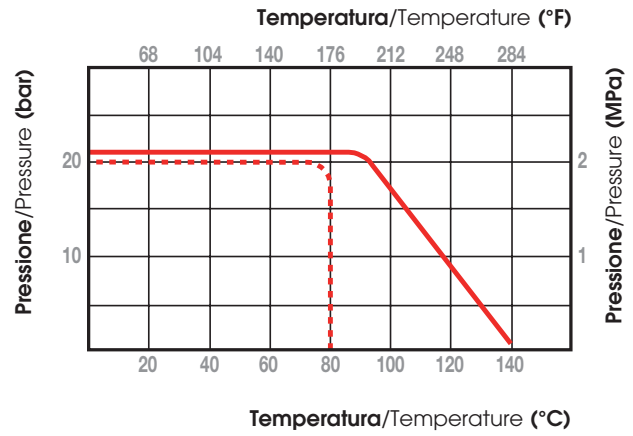
Temperatura minima / Minimum temperature: -15 °C
Temperatura massima / Maximum temperature: +130 °C

Fluidi compatibili / Fluids

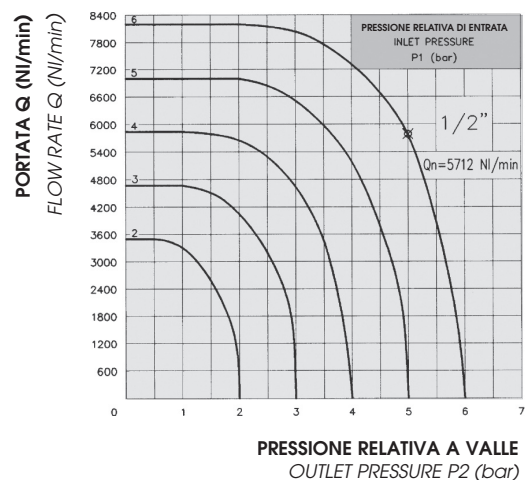
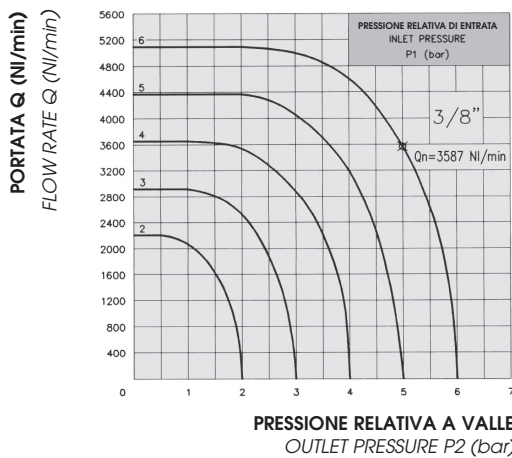
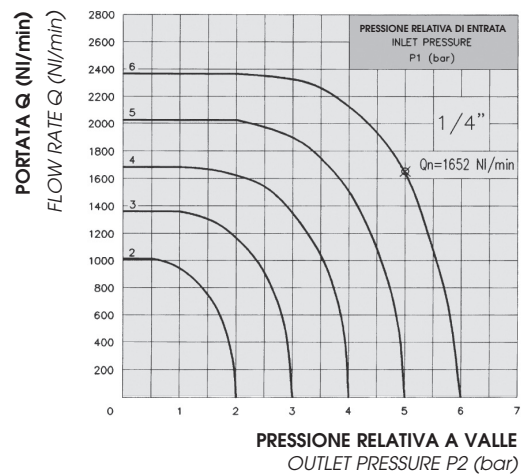
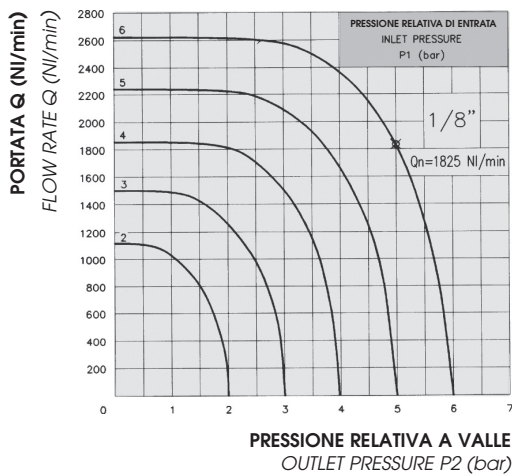
Aria compressa, acqua, oli.
*1° e 2° famiglia di gas a media pressione.
3° famiglia di gas a bassa pressione.
Compressed air, water, oils.
*1st and 2nd family gases at medium pressure.
3rd family gases at low pressure.

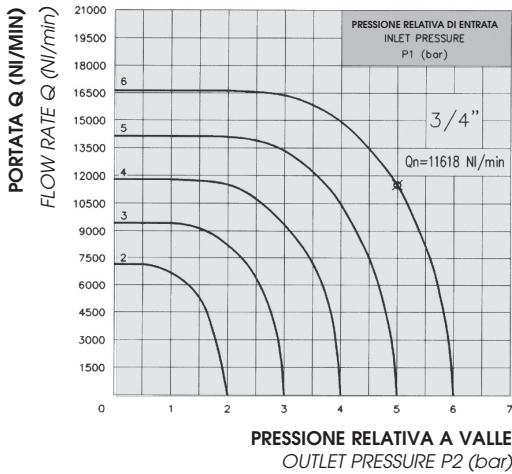
DIAGRAMMA PRESSIONE-TEMPERATURA
 PRESSURE-TEMPERATURE RATINGS DIAGRAM

- PTFE + NBR
- PTFE + FKM



CURVE CARATTERISTICHE DI FLUSSO PER ARIA
 RELATIVE ALLE VALVOLE A SFERA GHILUX ART. 6400 FEMMINA-FEMMINA
 CHARACTERISTIC CURVES OF FLOW FOR AIR
 PERTINENT TO THE BALL VALVES GHILUX ART. 6400 FEMALE-FEMALE





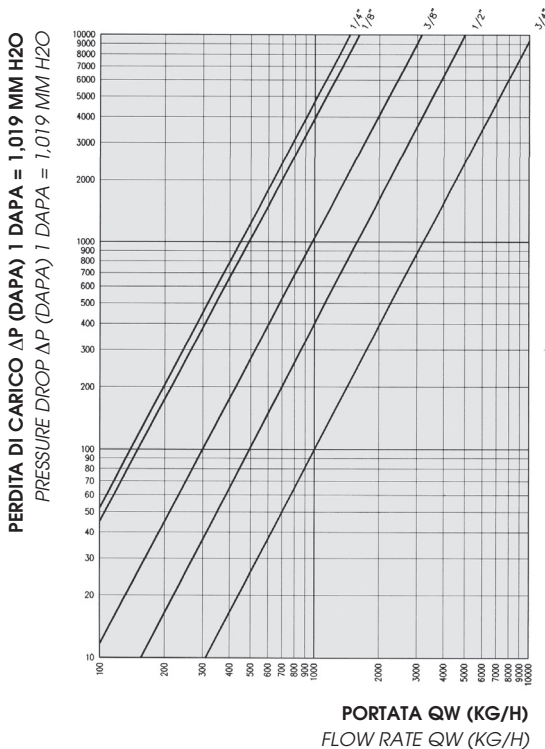
Sui vari diagrammi é evidenziato il valore di Q_n relativo ad una pressione $P_1 = 6$ bar e ad una pressione $P_2 = 5$ bar.

On the different diagrams is marked the value of flow rate Q_n pertinent to a pressure $P_1 = 6$ bar and to a pressure $P_2 = 5$ bar.

CERTIFICATO DI PROVA N° 36794 RILASCIATO DALL' "ISTITUTO GIORDANO" IN DATA 13/06/1990.

TEST CERTIFICATE N° 36794 ISSUED BY THE "ISTITUTO GIORDANO" ON THE 13/06/1990.

DIAGRAMMA DELLA CARATTERISTICA PORTATA-PERDITA DI CARICO RELATIVO ALLE VALVOLE A SFERA GHILUX ART. 6400 FEMMINA-FEMMINA PER ACQUA
DIAGRAM OF THE FLOW RATE AND PRESSURE DROP CHARACTERISTICS PERTINENT TO THE BALL VALVES GHILUX ART. 6400 FEMALE-FEMALE FOR WATER



COEFFICIENTI DI PORTATA Kv
FLOW RATE FACTORS Kv

Riportiamo in tabella il coefficiente di portata K_v delle valvole a sfera GHILUX, ricordando che tale coefficiente rappresenta la quantità d'acqua che attraversa la valvola nell'unità di tempo (Kg/h) alla temperatura di 15.5° C e che determina una caduta di pressione unitaria.

On the following table we specify the flow rate factor K_v of the ball valves GHILUX, we remind You that this factor represent the quantity of water that cross the valve in the unit time (Kg/h) at the temperature of 15.5° C and it determines a drop of unitary pressure.

Misura Size	Coefficiente di Portata Idraulica Factor of hydraulic flow rate K_v (Kg/h)
1/8"	1614
1/4"	1461
3/8"	3164
1/2"	5051
3/4"	10274

CERTIFICATO DI PROVA N. 36547
 TEST CERTIFICATE N. 36547

RILASCIATO DALL' "ISTITUTO GIORDANO" IN DATA 31/05/1990
 ISSUED BY THE "ISTITUTO GIORDANO" ON THE 31/05/199

COME ORDINARE

Le valvole a sfera standard della serie GHILUX prevedono:

- Trattamento superficiale di CROMATURA
- Ogiva in OTTONE
- Maniglia CORTA
- Piastrina ROSSA

Gli articoli standard possono essere ordinati specificando solo CODICE, MISURA, QUANTITA'.

Ogni variazione allo standard deve essere specificata sull'ordine mediante una descrizione (es. Maniglia Lunga, Piastrina Verde, ecc.).

HOW TO ORDER

The ball valves GHILUX series are supplied with:

- Surface treatment of CHROME-NICKEL PLATED
- BRASS Olive
- SHORT Handle
- RED Plate

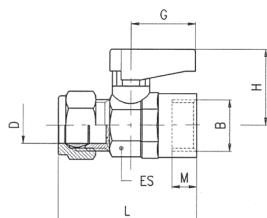
To order the standard items simply specify the ARTICLE CODE, SIZE and QUANTITY.

Every kind of changes must be specified on the order using a description (ex. LONG handle, GREEN plate, etc.).

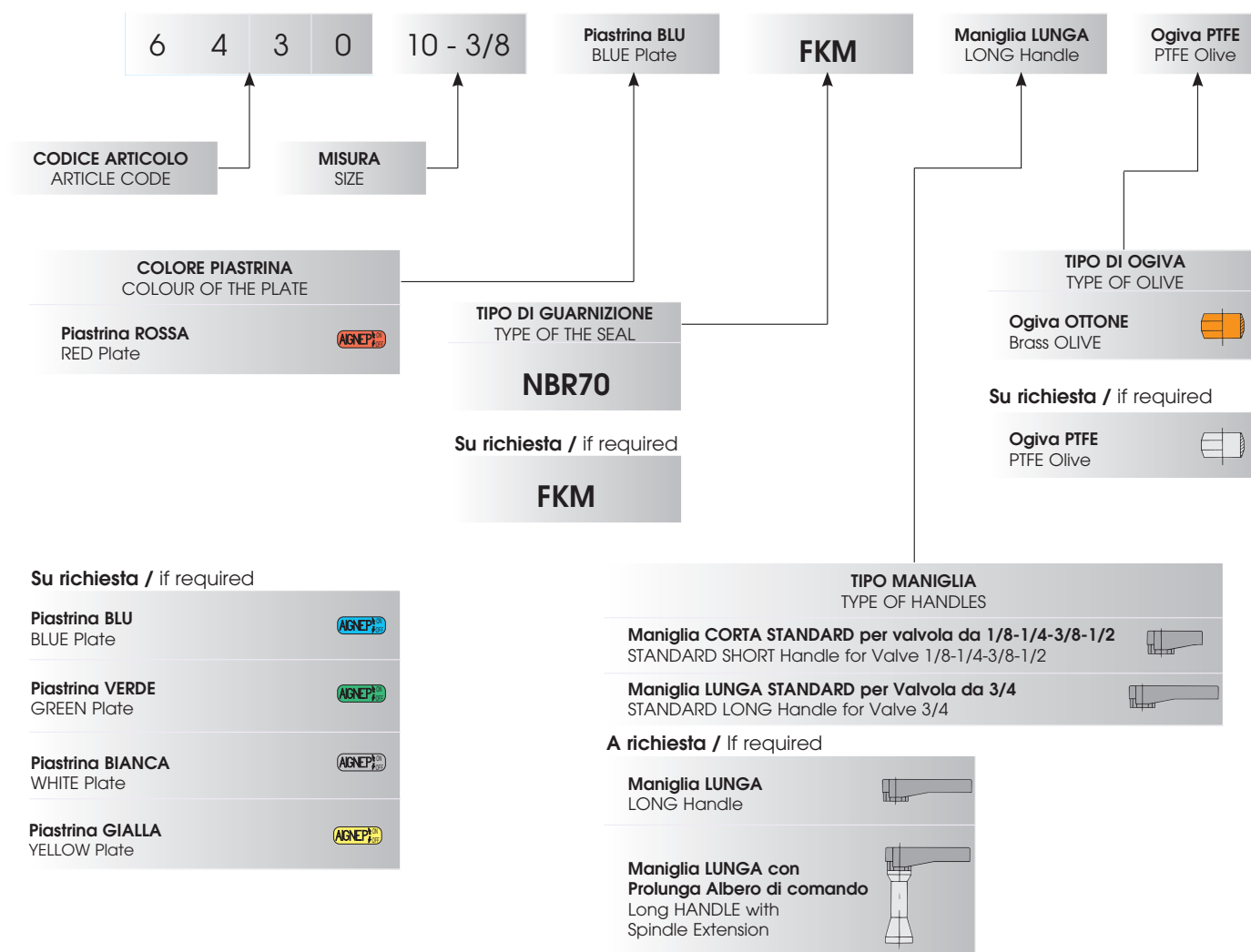
6430

VALVOLA TUBO - FEMMINA G ISO 228 (MANIGLIA STANDARD - PIASTRINA ROSSA)

TUBE - FEMALE G ISO 228 VALVE (STANDARD HANDLE - RED PLATE)

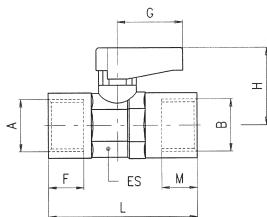


Codice Code	D	B	DN	ES	M	L	G	H	Conf. Pack.
0643000001	6	1/8	5.5	14-15	7	41	19	21	25
0643000002	8	1/8	5.5	14-15	7	43	19	21	25
0643000003	8	1/4	5.5	14-15	8	43	19	21	25
0643000004	10	3/8	8	18-19	9	48	19	22	10
0643000005	12	3/8	8	18-19	9	49	19	22	10
0643000006	14	1/2	10	22-23	10	55.5	26	30.5	10
0643000007	15	1/2	10	22-23	10	55.5	26	30.5	10
0643000098	16	3/4	14	28-30	12	63.5	50	33	5
0643000099	18	3/4	14	28-30	12	63.5	50	33	5



6300

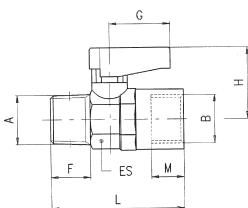
VALVOLA FEMMINA RP ISO 7 - FEMMINA RP ISO 7 (MANIGLIA STANDARD - PIASTRINA ROSSA)
 FEMALE RP ISO 7 - FEMALE RP ISO 7 VALVE (STANDARD HANDLE - RED PLATE)



Codice Code	A	B	DN	ES	F	M	L	G	H	Conf. Pack.
063000001	1/8	1/8	5.5	14-15	7.4	7.4	36	19	21	25
063000002	1/4	1/4	5.5	14-15	11	11	43	19	21	25
063000003	3/8	3/8	8	18-19	11.4	11.4	47	19	22	10
063000004	1/2	1/2	10	22-23	15	15	59	26	30.5	10
063000005	3/4	3/4	14	28-30	16.3	16.3	67	50	33	5

6310

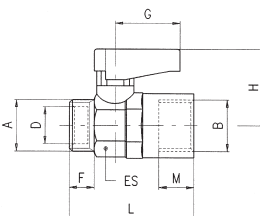
VALVOLA MASCHIO CONICO R ISO 7 - FEMMINA RP ISO 7 (MANIGLIA STANDARD - PIASTRINA ROSSA)
 TAPER MALE R ISO 7 - FEMALE RP ISO 7 VALVE (STANDARD HANDLE - RED PLATE)



Codice Code	A	B	DN	ES	F	M	L	G	H	Conf. Pack.
063100001	1/8	1/8	5.5	14-15	7.4	7.4	36	19	21	25
063100002	1/4	1/8	5.5	14-15	11	7.4	40.5	19	21	25
063100003	1/4	1/4	5.5	14-15	11	11	43	19	21	25
063100004	3/8	3/8	8	18-19	11.4	11.4	46	19	22	10
063100005	1/2	1/2	10	22-23	15	15	57	26	30.5	10
063100006	3/4	3/4	14	28-30	16.3	16.3	63	50	33	5

6320

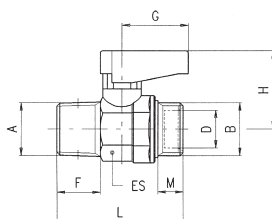
VALVOLA MASCHIO CILINDRICO GA ISO 228 - FEMMINA RP ISO 7 (MANIGLIA STANDARD - PIASTRINA ROSSA)
 PARALLEL MALE GA ISO 228 - FEMALE RP ISO 7 VALVE (STANDARD HANDLE - RED PLATE)



Codice Code	A	B	DN	ES	D	F	M	L	G	H	Conf. Pack.
063200001	1/8	1/8	5.5	14-15	6.2	7	7.4	34.5	19	21	25
063200002	1/4	1/8	5.5	14-15	8.2	8	7.4	35.5	19	21	25
063200003	1/4	1/4	5.5	14-15	8.2	8	11	38	19	21	25
063200004	3/8	3/8	8	18-19	10.2	9	11.4	41.5	19	22	10
063200005	1/2	1/2	10	22-23	15.2	10	15	50	26	30.5	10
063200006	3/4	3/4	14	28-30	18.2	12	16.3	56.5	50	33	5

6330

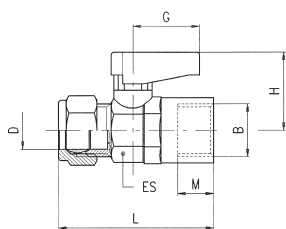
VALVOLA MASCHIO CONICO R ISO 7 - MASCHIO CILINDRICO GA ISO 228 (MANIGLIA STANDARD - PIASTRINA ROSSA)
 TAPER MALE R ISO 7 - PARALLEL MALE GA ISO 228 VALVE (STANDARD HANDLE - RED PLATE)



Codice Code	A	B	DN	ES	D	F	M	L	G	H	Conf. Pack.
063300001	1/8	1/8	5.5	14-15	6.2	7.4	7	33.5	19	21	25
063300002	1/8	1/4	5.5	14-15	8.2	7.4	8	33.5	19	21	25
063300003	1/4	1/8	5.5	14-15	6.2	11	7	38	19	21	25
063300004	1/4	1/4	5.5	14-15	8.2	11	8	38	19	21	25
063300005	3/8	3/8	8	18-19	10.2	11.4	9	41.5	19	22	10
063300006	1/2	1/2	10	22-23	15.2	15	10	49	26	30.5	10
063300007	3/4	3/4	14	28-30	18.2	16.3	12	55.5	50	33	5

6340

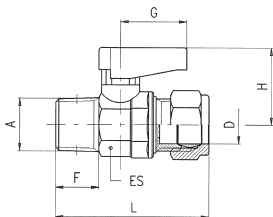
VALVOLA TUBO - FEMMINA RP ISO 7 (MANIGLIA STANDARD - PIASTRINA ROSSA)
TUBE - FEMALE RP ISO 7 VALVE (STANDARD HANDLE - RED PLATE)



Codice Code	D	B	DN	ES	M	L	G	H	Conf. Pack.
0634000001	6	1/8	5.5	14-15	7.4	41.5	19	21	25
0634000002	8	1/8	5.5	14-15	7.4	43	19	21	25
0634000003	8	1/4	5.5	14-15	11	46	19	21	25
0634000004	10	3/8	8	18-19	11.4	50.5	19	22	10
0634000005	12	3/8	8	18-19	11.4	51.5	19	22	10
0634000006	14	1/2	10	22-23	15	61.5	26	30.5	10
0634000007	15	1/2	10	22-23	15	61.5	26	30.5	10
0634000098	16	3/4	14	28-30	16.3	68	50	33	5
0634000099	18	3/4	14	28-30	16.3	68	50	33	5

6350

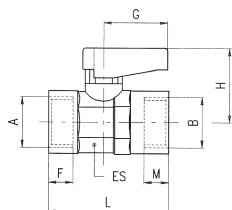
VALVOLA MASCHIO CONICO R ISO 7 - TUBO (MANIGLIA STANDARD - PIASTRINA ROSSA)
TAPER MALE R ISO 7 - TUBE VALVE (STANDARD HANDLE - RED PLATE)



Codice Code	A	D	DN	ES	F	L	G	H	Conf. Pack.
0635000001	1/8	6	5.5	14-15	7.4	40.5	19	21	25
0635000002	1/8	8	5.5	14-15	7.4	41.5	19	21	25
0635000003	1/4	6	5.5	14-15	11	46	19	21	25
0635000004	1/4	8	5.5	14-15	11	45	19	21	25
0635000005	3/8	10	8	18-19	11.4	50.5	19	22	10
0635000006	3/8	12	8	18-19	11.4	51.5	19	22	10
0635000007	1/2	14	10	22-23	15	59.5	26	30.5	10
0635000008	1/2	15	10	22-23	15	59.5	26	30.5	10
0635000109	3/4	16	14	28-30	16.3	67	50	33	5
0635000110	3/4	18	14	28-30	16.3	67	50	33	5

6400

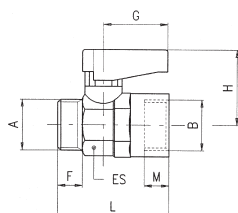
VALVOLA FEMMINA G ISO 228 - FEMMINA G ISO 228 (MANIGLIA STANDARD - PIASTRINA ROSSA)
FEMALE G ISO 228 - FEMALE G ISO 228 VALVE (STANDARD HANDLE - RED PLATE)



Codice Code	A	B	DN	ES	F	M	L	G	H	Conf. Pack.
0640000001	1/8	1/8	5.5	14-15	7	7	35	19	21	25
0640000002	1/4	1/4	5.5	14-15	8	8	37	19	21	25
0640000003	3/8	3/8	8	18-19	9	9	42	19	22	10
0640000004	1/2	1/2	10	22-23	10	10	49	26	30.5	10
0640000055	3/4	3/4	14	28-30	12	12	58	50	33	5

6410

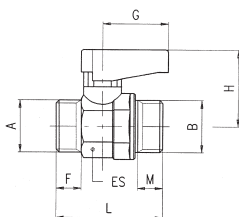
VALVOLA MASCHIO CILINDRICO GA ISO 228 - FEMMINA G ISO 228 (MANIGLIA STANDARD - PIASTRINA ROSSA)
PARALLEL MALE GA ISO 228 - FEMALE G ISO 228 VALVE (STANDARD HANDLE - RED PLATE)



Codice Code	A	B	DN	ES	F	M	L	G	H	Conf. Pack.
0641000001	1/8	1/8	5.5	14-15	7	7	34	19	21	25
0641000002	1/4	1/8	5.5	14-15	8	7	35	19	21	25
0641000003	1/4	1/4	5.5	14-15	8	8	35	19	21	25
0641000004	3/8	3/8	8	18-19	9	9	39	19	22	10
0641000005	1/2	1/2	10	22-23	10	10	45	26	30.5	10
0641000066	3/4	3/4	14	28-30	12	12	52	50	33	5

6420

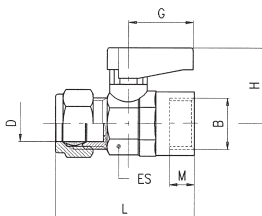
VALVOLA MASCHIO CILINDRICO GA ISO 228 - MASCHIO CILINDRICO GA ISO 228 (MANIGLIA STANDARD - PIASTRINA ROSSA)
PARALLEL MALE GA ISO 228 - PARALLEL MALE GA ISO 228 VALVE (STANDARD HANDLE - RED PLATE)



Codice Code	A	B	DN	ES	F	M	L	G	H	Conf. Pack.
0642000001	1/8	1/8	5.5	14-15	7	7	32	19	21	25
0642000002	1/8	1/4	5.5	14-15	7	8	32	19	21	25
0642000003	1/4	1/4	5.5	14-15	8	8	33	19	21	25
0642000004	3/8	1/4	5.5	14-15	9	8	33	19	21	25
0642000005	3/8	3/8	8	18-19	9	9	37	19	22	10
0642000006	1/2	3/8	8	18-19	10	9	37	19	22	10
0642000007	1/2	1/2	10	22-23	10	10	42	26	30.5	10
0642000008	3/4	1/2	10	22-23	12	10	42	50	30.5	10
0642000009	3/4	3/4	14	28-30	12	12	49	50	33	5

6430

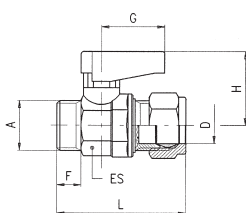
VALVOLA TUBO - FEMMINA G ISO 228 (MANIGLIA STANDARD - PIASTRINA ROSSA)
TUBE - FEMALE G ISO 228 VALVE (STANDARD HANDLE - RED PLATE)



Codice Code	D	B	DN	ES	M	L	G	H	Conf. Pack.
0643000001	6	1/8	5.5	14-15	7	41	19	21	25
0643000002	8	1/8	5.5	14-15	7	43	19	21	25
0643000003	8	1/4	5.5	14-15	8	43	19	21	25
0643000004	10	3/8	8	18-19	9	48	19	22	10
0643000005	12	3/8	8	18-19	9	49	19	22	10
0643000006	14	1/2	10	22-23	10	55.5	26	30.5	10
0643000007	15	1/2	10	22-23	10	55.5	26	30.5	10
0643000008	16	3/4	14	28-30	12	63.5	50	33	5
0643000009	18	3/4	14	28-30	12	63.5	50	33	5

6440

VALVOLA MASCHIO CILINDRICO GA ISO 228 - TUBO (MANIGLIA STANDARD - PIASTRINA ROSSA)
PARALLEL MALE GA ISO 228 - TUBE VALVE (STANDARD HANDLE - RED PLATE)



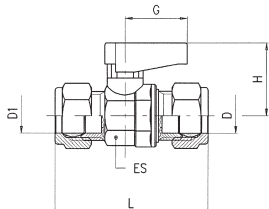
Codice Code	A	D	DN	ES	F	L	G	H	Conf. Pack.
0644000001	1/8	6	5.5	14-15	7	39	19	21	25
0644000002	1/8	8	5.5	14-15	7	40	19	21	25
0644000003	1/4	6	5.5	14-15	8	40	19	21	25
0644000004	1/4	8	5.5	14-15	8	41	19	21	25
0644000005	1/4	10	5.5	14-15	8	44	19	21	25
0644000006	3/8	8	5.5	14-15	9	43	19	21	25
0644000007	3/8	10	8	18-19	9	46	19	22	10
0644000008	3/8	12	8	18-19	9	47	19	22	10
0644000009	3/8	14	8	18-19	9	50.5	19	22	10
0644000010	3/8	15	8	18-19	9	50.5	19	22	10
0644000011	1/2	10	8	18-19	10	49	19	22	10
0644000012	1/2	12	8	18-19	10	50	19	22	10
0644000013	1/2	14	10	22-23	10	52.5	26	30.5	10
0644000014	1/2	15	10	22-23	10	52.5	26	30.5	10
0644000015	3/4	14	10	22-23	12	56.5	26	30.5	10
0644000016	3/4	15	10	22-23	12	56.5	26	30.5	10
0644000197	3/4	16	14	28-30	12	60.5	50	33	5
0644000198	3/4	18	14	28-30	12	60.5	50	33	5

• Nelle misure 1/4-8, 1/4-10, 3/8-14, 3/8-15 il dado, il bicono e il filetto A sono all'opposto della figura.

• In the sizes 1/4-8, 1/4-10, 3/8-14, 3/8-15 the nut, the double cone and the thread A are at the opposite side of the picture.

6450

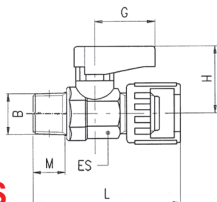
VALVOLA TUBO - TUBO (MANIGLIA STANDARD - PIASTRINA ROSSA)
TUBE - TUBE VALVE (STANDARD HANDLE - RED PLATE)



Codice Code	D1	D	DN	ES	L	G	H	Conf. Pack.
064500001	6	6	5.5	14-15	46	19	21	25
064500002	6	8	5.5	14-15	48	19	21	25
064500003	8	8	5.5	14-15	48	19	21	25
064500004	10	8	5.5	14-15	51	19	21	25
064500005	10	10	8	18-19	55	19	22	10
064500006	10	12	8	18-19	56	19	22	10
064500007	12	12	8	18-19	57	19	22	10
064500008	14	10	8	18-19	59.5	19	22	10
064500009	14	12	8	18-19	60.5	19	22	10
064500010	15	10	8	18-19	59.5	19	22	10
064500011	15	12	8	18-19	60.5	19	22	10
064500012	14	14	10	22-23	63	26	30.5	10
064500013	15	14	10	22-23	63	26	30.5	10
064500014	15	15	10	22-23	63	26	30.5	10
064500015	16	14	10	22-23	68	26	30.5	10
064500016	16	15	10	22-23	68	26	30.5	10
064500017	18	14	10	22-23	68	26	30.5	10
064500018	18	15	10	22-23	68	26	30.5	10
064500019	18	16	14	28-30	71	50	33	5
064500020	18	18	14	28-30	71	50	33	5

6460

VALVOLE DADO CAPETTATO - MASCHIO CONICO R ISO 7 (MANIGLIA STANDARD - PIASTRINA ROSSA)
MILLED NUT - TAPER MALE R ISO 7 VALVE (STANDARD HANDLE - RED PLATE)

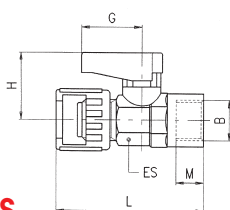


NO GAS

Codice Code	B	DN	ES	M	L	G	H	Conf. Pack.
064600001	1/8	5.5	14-15	7.4	44	19	21	10
064600002	1/4	5.5	14-15	11	49.5	19	21	10
064600003	3/8	8	18-19	11.4	50	19	21	10

6470

VALVOLE DADO CAPETTATO - FEMMINA G ISO 228 (MANIGLIA STANDARD - PIASTRINA ROSSA)
MILLED NUT - FEMALE G ISO 228 VALVE (STANDARD HANDLE - RED PLATE)

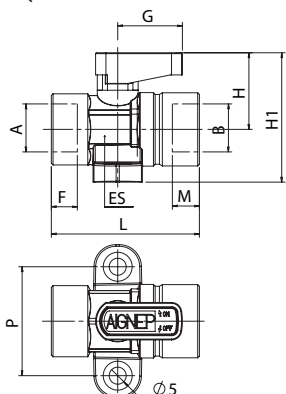


NO GAS

Codice Code	B	DN	ES	M	L	G	H	Conf. Pack.
064700001	1/8	5.5	14-15	7	46	19	21	10
064700002	1/4	5.5	14-15	8	46	19	21	10

6490

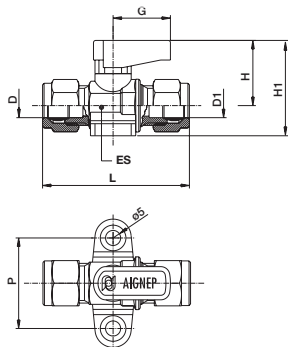
VALVOLA CON PIEDINI D'ANCORAGGIO FEMMINA-FEMMINA (MANIGLIA STANDARD - PIASTRINA ROSSA)
FOOT MOUNTED FEMALE-FEMALE VALVE (STANDARD HANDLE - RED PLATE)



Codice Code	A	B	DN	ES	L	F	M	G	H	H1	P	Conf. Pack.
064900002	1/4	1/4	5.5	14-15	43.5	8	8	19	21	31.5	30	10
064900003	3/8	3/8	8	18-19	8.5	9	9	19	22	38	32	10

6500

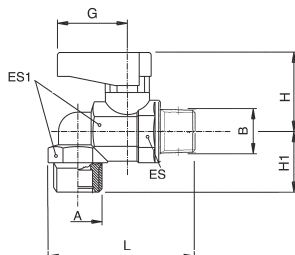
VALVOLA CON PIEDINI D'ANCORAGGIO TUBO-TUBO (MANIGLIA STANDARD - PIASTRINA ROSSA)
 FOOT MOUNTED TUBE-TUBE VALVE (STANDARD HANDLE - RED PLATE)



Codice Code	D	D1	DN	ES	L	H	H1	G	P	Conf. Pack.
065000001	8	8	5.5	14-15	50	21	32	19	30	10

6540

VALVOLA A L MASCHIO CILINDRICO GA ISO 228-MASCHIO CONICO R ISO 7 (MANIGLIA STANDARD - PIASTRINA ROSSA)
 ELBOW PARALLEL MALE GA ISO 228-TAPER MALE R ISO 7 VALVE (STANDARD HANDLE - RED PLATE)



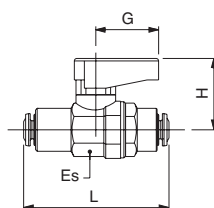
Codice Code	A	B	DN	ES	ES1	L	H	H1	G	Conf. Pack.
065400001	1/4	1/4	5.5	14-15	17	48	21	17	19	10

6560

VALVOLA CON ATTACCHI TUBO AUTOMATICI (MANIGLIA STANDARD - PIASTRINA ROSSA)
 WITH PUSH-IN CONNECTIONS VALVE (STANDARD HANDLE - RED PLATE)



NO GAS



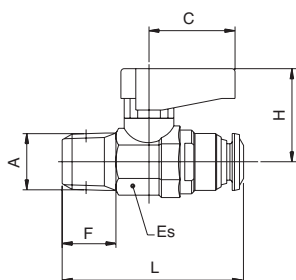
Codice Code	Tubo Tube	Tubo Tube	DN	ES	L	G	H	Conf. Pack.
065600001	4	4	3	14-15	44	19	21	10
065600002	6	6	5	14-15	48	19	21	10
065600003	8	8	5.5	14-15	48	19	21	10
0656000075	10	10	8	18-19	58.5	19	22	10
0656000076	12	12	10	22-23	66	26	30.5	10

6570

VALVOLA MASCHIO CONICO R ISO 7 - ATTACCO TUBO AUTOMATICO (MANIGLIA STANDARD - PIASTRINA ROSSA)
 TAPER MALE R ISO 7- PUSH-FIT CONNECTIONS VALVE (STANDARD HANDLE - RED PLATE)



NO GAS



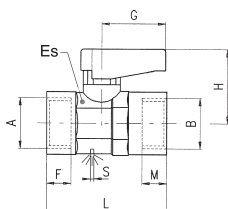
Codice Code	A	Tubo Tube	DN	F	Es	L	C	H	Conf. Pack.
0657000001	1/8	4	3	8.5	14-15	35	19	21	10
0657000002	1/8	6	5	8.5	14-15	40	19	21	10
0657000004	1/8	8	5.5	8.5	14-15	41.5	19	21	10
0657000003	1/4	6	5	12.5	14-15	38.5	19	21	10
0657000005	1/4	8	5.5	12.5	14-15	45.5	19	22	10

6600

VALVOLA CON FORO DI SFIATO FEMMINA G ISO 228 (MANIGLIA STANDARD - PIASTRINA ROSSA)
 EXHAUST HOLE FEMALE G ISO 228 - FEMALE G ISO 228 VALVE (STANDARD HANDLE - RED PLATE)



NO GAS



Codice Code	A	B	DN	ES	F	M	L	G	H	S	Conf. Pack.
0660000001	1/8	1/8	5.5	14-15	7	7	35	19	21	2.5	10
0660000002	1/4	1/4	5.5	14-15	8	8	37	19	21	2.5	10
0660000003	3/8	3/8	8	18-19	9	9	42	19	22	3	10